
Student Code of Conduct

LIVING NUDGEES SPIRIT
'Being Signum Fidei'



Reviewed February 2026



Context

St Joseph's Nudgee College is committed to providing a safe, respectful, and disciplined learning environment for all students, staff, parents, and visitors. All students in our school have the right to learn in an environment where they can flourish. As a Catholic school in the Edmund Rice Tradition, we strive to offer a Liberating Education, based on Gospel Spirituality, within an Inclusive Community committed to Justice and Solidarity.

Rationale

Research is clear about the power of relationships in achieving successful educational outcomes. At St Joseph's Nudgee College, we provide a classroom environment where respect and connection are crucial elements for a healthy education. The Pastoral Care structure and processes are based upon positive relationships, with trust being an integral part. Our Code of Conduct sets clear expectations of a Signum Fidei graduate; our expectations are high. We teach and model the behaviours we value in our students so that all can feel *respected and connected*.





LIVING NUDGEE SPIRIT - “Being Signum Fidei”: Actions

Nudgee College is a place of action. A true Signum Fidei ensures that his actions help himself and others feel respected and connected. The following are the expected actions:

Respected

- Striving to build positive relationships by demonstrating mutual respect to peers, staff, and the wider community
- Valuing the diversity of the student population (race, religion, abilities/gifts, sexuality, backgrounds)
- Taking care of personal and College property.
- Living the charism of Edmund Rice

Connected

- Being at school, on time, and prepared
- Striving for excellence by setting and seeking to achieve our goals
- Seeking opportunities to participate in the broader life of the College
- Wearing our uniform with pride and carrying ourselves confidently

The College’s Mission is that we will all be Signum Fidei - a Sign of Faith. The College will respond decisively to conduct that is contrary to our goals and vision for each student.





NUDGEE COLLEGE CODE OF CONDUCT

Living Nudgee Spirit

RESPECTED

Interpersonal Skills

- Striving to build positive relationships by demonstrating mutual respect to peers, staff and the wider community.

Compassion & Empathy

- Valuing the diversity of the student population (race, religion, abilities, sexuality, background).

Gratitude

- Taking care of personal, College, and others property.

Disposition to Serve

- Living the charism of Edmund Rice.

CONNECTED

Enterprise & Curiosity

- Being at school on time, prepared, and ready to learn.

Personal Excellence

- Striving for excellence by setting and seeking to achieve our goals.

Positive Engagement

- Seeking opportunities to participate in the broader life of Nudgee College.

Confidence & Humility

- Wear our uniform with pride and carry ourselves confidently.





Faith Life - College Prayers

Nudgee College School Prayer

O God of Justice and Compassion
We place before you our needs.
As members of St Joseph's Nudgee College,
Nourish and inspire us to live justly.
Guide us to be faithful to the vision of Edmund Rice.
Who showed a deep love for the poor and marginalised.
Open our hearts and minds to accept and welcome
all into our community.
May we work together to build a better world,
And seek to live lives of love and service, justice and peace.
To be signs of faith to all.
St Joseph..... (Response) *PRAY FOR US.*
St Mary of the Cross..... (Response) *PRAY FOR US.*
Blessed Edmund Rice..... (Response) *PRAY FOR US.*

Live Jesus in our hearts

FOREVER, AMEN.

Afternoon Prayer

O God of Justice and Compassion
We place before you our needs.
As members of St Joseph's Nudgee College,
Nourish and inspire us to live justly.
To be signs of faith to all.

Live Jesus in our hearts

FOREVER, AMEN.

Glory Be

Glory be to the Father,
and to the Son,
and to the Holy Spirit,
as it was in the beginning,
is now, and ever shall be,
world without end.

Amen.



Lord's Prayer

Our Father, who art in Heaven,
hallowed be your name;
thy Kingdom come,
thy will be done on earth as it is in
Heaven.

Give us this day our daily bread,
and forgive us our trespasses,
as we forgive those who trespass
against us;

and lead us not into temptation,
but deliver us from evil.

Amen.

Grace and Gratitude (*before meals*)

Ever Generous God,
You bless us with the gifts that nourish us.
May we be grateful for this food and
For those who provided it for us.

We pray this prayer through Jesus Christ.

Amen.

Hail Mary

Hail Mary, full of grace,

The Lord is with thee;

Blessed art thou amongst women,

And blessed is the fruit of thy womb, Jesus.

Holy Mary, Mother of God,

Pray for us sinners,

Now and at the hour of our death.

Amen.

Blessed Edmund Rice Prayer

O God, we thank you for the life of Blessed
Edmund Rice.

He opened his heart to Christ present in those
oppressed by poverty and injustice.

May we follow his example of faith and
generosity.

Grant us the courage and compassion of
Blessed

Edmund as we seek to live lives of love and
service.

We ask this through Christ our Lord.

Amen.



Mary MacKillop Prayer

Ever generous God,
You inspired Saint Mary Mackillop to live her life
faithful to the Gospel of Jesus Christ
and constant in bringing about hope and
encouragement to those who were
disheartened, lonely or needy.
With confidence in your generous providence
and joining with Saint Mary MacKillop
We ask that you grant our request...
We ask that our faith and hope be fired afresh
by the Holy Spirit so that we too, like Mary
MacKillop,
may live with courage, trust and openness.
Ever generous God hear our prayer.
We ask this through Jesus Christ.

Amen.

Prayer for Reconciliation

Lord God, bring us together as one,
Reconciled with you and with each other.
You made us in your likeness.
You gave us your Son, Jesus.
To show us the way to peace, forgiveness
and welcome.
Lord God, bring us together as one,
Different in culture, but given new life in Jesus:
Together as your body, your church, your
people.
Lord God, bring us together as one,
Reconciled, healed, forgiven,
Sharing you with others as you have called us to
do.
In Jesus Christ, let us be together as one.

Amen.

Prayer for Peace

Compassionate God,
We pray for peace in our world.
For better understanding between all races.
For respect of the individual regardless of their religion,
way of life and colour of skin.
May we realise that we are all formed in your own
image and likeness and therefore, although all unique,
we are perfect in every way.
In response, may we always treat others with the
respect and dignity they deserve.
May there be an end to hatred, bloodshed and
terrorism.
Grant us the ability to forgive and move on
May we all live in harmony.
Compassionate God, grant peace to our world.

Amen



The sections below are the specific policies and procedures that constitute the student code of conduct. Many of these existing policies should be part of your awareness. They are listed alphabetically and serve as a summary of each policy. You will find a link to the extended versions at the end of each section. Should you require any clarification or wish to discuss any details within, please connect with your PC tutor, House Dean or a member of the student formation team.

Assault

Assault is aggressive physical or sexual contact, use of force or intimidating behaviour causing fear in another person that the threat will be executed. Examples include striking or attempting to strike another person, threatening another person with violence and verbal abuse with a threat of imminent harm. Inappropriate touching would also fall under this category.

St Joseph's Nudgee College is committed to providing a safe environment for all students, staff, and visitors.

- Assaults against students and other forms of violence are unacceptable and will not be tolerated at Nudgee College;
- All incidents of assault against students must be reported to the Principal (or Principal's delegate) and shall be thoroughly investigated;
- Appropriate consequences will be applied for unacceptable behaviour, encouraging students to take responsibility for their actions; and
- Treatment, counselling, and ongoing support will be available for all students affected by assault.

Full Policy: [Assault \(Student against Student\) policy](#)

Attendance

- Students must attend school each day. They must be on time and have all the necessary equipment.
- Students must never leave school during school hours without permission from parents/carers or the school. A student must obtain permission **and** sign out at the student office.
- Report to the Student Office if arriving at school after 8.25am - Students must have their College ID card
- Ensure all missed schoolwork is completed
- Students who truant, or are continually late to classes will be issued a detention to make up for the missed time.

Full Policy: [Attendance policy and procedures](#)



Bullying and Harassment

Bullying is repeated verbal, physical, social, or psychological behaviour that is harmful and involves the misuse of power by an individual or group towards one or more persons. Bullying can take many forms including: verbal, physical, social, or cyber.

There is always an element of confusion about the nature of bullying. Below is a summary of several online articles that help to explain the differences in certain types of behaviour sometimes evident in schools. These terms are referred to at Nudgee College by way of education:

- **Rude:** Inadvertently saying or doing something that hurts someone else
- **Mean:** Purposefully saying or doing something to hurt someone.
- **Bullying:** Intentionally aggressive or hurtful behaviour, repeated over time, that involves an imbalance of power

Harassment includes any unwelcome behaviour that offends, humiliates, or intimidates, or is physically hurtful. Harassment can include behaviour such as:

- Discrimination based on race, gender, sexuality, or beliefs. Either in person or via some form of digital platform (including social media and group messages).
- Intimidation, humiliation, or any behaviour whereby someone feels uncomfortable.
- Aggressive behaviour (shoving, intimidating, hitting) directed at another person, or damaging their belongings.

Full Policy: [Bullying and Harassment policy](#)

Bus Behaviour

Students must follow a set of behavioural guidelines when travelling on College buses. Poor behaviour can affect the ability of a driver to concentrate and is a safety concern for the College. It is expected that ALL students who travel on a College bus adhere to the expected behaviour guidelines:

- Following bus rules (including wearing a seatbelt at all times)
- Staying in their seat
- Behaving in a calm, non-aggressive way
- Keeping hands and feet to self
- Refrain from using offensive or aggressive language

If students fail to follow the behavioural guidelines, the College will respond. This may include possible suspensions or exclusions from using College buses.



Cars

- Students who attain their licence must apply for permission to drive and park on campus.
- We realise that several students have their driver's licence and in some cases, it may be necessary for families to seek permission to drive themselves (and siblings) to and from school.
- A driving permit will be issued upon completion of the application.
 - Students may drive siblings.
 - No student can be driven by another student unless permission has first been sought by the student's parents.
 - Requests for permission can be attained by following this link ([here](#))
 - Boys who do not adhere to this policy may be suspended from the College or have their driving privileges revoked.

Full Policy: [Student Driving Policy](#)

Chewing Gum

- Chewing gum is not permitted on the College grounds or buildings (unless explicitly directed by a member of the Leadership team).

Classrooms

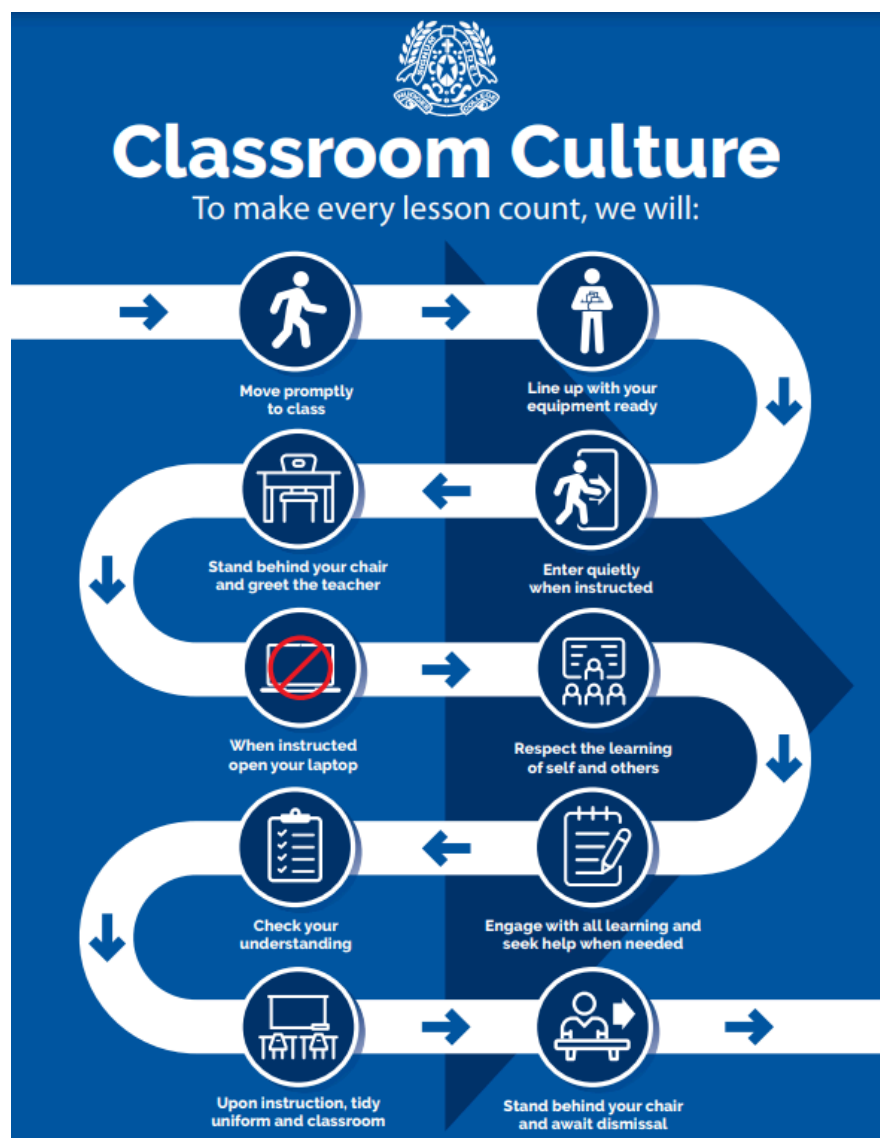
The College has excellent classroom facilities, equipped with furniture and fittings allowing for an effective learning environment. For all to benefit from these, the following rules must be observed:

- Desks are to be kept tidy and free from any form of graffiti.
- Food is not to be consumed in the classroom.
- In Year 7 only lockers are provided to students. These should be kept tidy and free from any form of graffiti. Unwanted books, papers and rubbish should not be allowed to accumulate.
- Students should refrain from accessing cupboards and using the whiteboard (unless authorised by a teacher).
- All bags should be neatly stored along the external walls of classrooms or on bag racks (as appropriate and available).
- Students should not be in any classroom or swipe access areas without a teacher in attendance.

Classroom Culture

Staff at St Joseph's Nudgee College are committed to delivering a high quality education to every student. The Classroom Culture process outlines the College's focused approach to behaviour intervention, providing support for teachers and identified students in order to redirect and re-establish relationships in the classroom while allowing quality teaching and learning to continue in a collaborative and rewarding way.

Classroom Routines





The 'Three R' Process

Recognise

- At the 'recognise' stage, the teacher will identify the unacceptable behaviour with the student.
- An unacceptable behaviour is a behaviour that contravenes the classroom expectations of the teacher.

Remind

If unacceptable behaviour continues:

- The teacher will give the student a reminder and clear choice to re-engage appropriately.
- This is an explicit instruction that the student can choose to follow the teacher's reasonable instruction or they will be sent to the Student Centre.

Remove

If unacceptable behaviour continues despite the prior interventions by the teacher:

- The teacher will remove the student from the classroom by sending them to the Reflection Room within the Student Office.

Confiscations

St Joseph's Nudgee College is committed to providing a safe environment for all our students, staff and visitors.

- Students must not use property at school or bring property to school that is in breach of College rules or this policy
- Any member of the teaching staff may confiscate student property that is deemed to be contraband
- St Joseph's Nudgee College staff follow the procedures set out in this Policy in relation to the confiscation and holding of contraband
- St Joseph's Nudgee College maintains a Log of Confiscations that records information on all contraband confiscated from students.
- Teaching staff may take from a student at the College, or at any College-sanctioned event, any property in the student's possession that:
 - is contrary to the College rules and/or values.
 - is disruptive to the College's learning environment



-
- poses a risk to the safety or well-being of students, staff, or visitors
 - is illegal
 - may cause damage to College property.

Property that meets any of these criteria is deemed to be “contraband”. Students who persistently bring or use contraband to the College will be subject to further disciplinary action.

Full Policy: [NC Confiscation of Student Property Policy](#)

Drugs / Alcohol / Vaping

St Joseph’s Nudgee College takes a strong, proactive stance against student involvement with alcohol, vaping, smoking, nicotine products, and/or illicit drugs. This policy is based on principles of harm minimization and emanates from our objective to have students feel respected and connected in all areas of their lives. It aims to achieve a balance between the individual rights of the students and the welfare of the St Joseph’s Nudgee College community.

- The use or supply of illegal/illicit drugs or toxic inhalants is considered a serious breach of College rules.
 - *Any form of illegal/illicit drug or toxic inhalant either supplied by, or in possession of, or being taken by a student may lead to immediate exclusion from the College.*
- The use or supply of smoking/vaping/nicotine products is considered a serious breach of College rules.
 - *Any form of smoking/nicotine product or vape either supplied by, in possession of, or being taken by a student may lead to immediate suspension from the College. Along with potential review of enrolment status.*
- Drinking of alcohol by any College students is banned.
 - *Students consuming, supplying, or in possession of alcohol either at school or any College-related event may lead to immediate suspension from the College. Along with potential review of enrolment status.*

Full Policy: [Drug and Alcohol policy](#)

Good Neighbours

Boys must remember that we live in the greater Boondall community and must be good neighbours to people who reside around the College, its playing fields, and the various shopping precincts nearby.



Mobile Phone Policy

The College accepts no responsibility for lost, stolen, or damaged technological devices at school, or while a student travels to and from school. Any student who brings a phone, AirPods, tablet (or other device) to school has total responsibility for looking after them. In cases of emergency, parents are reminded the College Office, Student Office, and Junior School Office can be contacted. Our expectation is that communication between Parents and students is via their College email account.

Student Responsibilities (Years 5-12)

- Mobile phones **must** not be disruptive to learning.
- Mobile phones are not to be used and **must** be out of sight throughout the entire school day (8:20am-2:55pm)
- Students are permitted to use such features as ApplePay for purchasing items at the tuckshop or locker room
- Students are not permitted to use AirPods or headphones between 8:20am and 2:55pm unless permission is provided by their class teacher or teacher on duty.
- **NB: Exemptions may be granted to students with personalised learning needs which are detailed and reviewed in their school support plans (i.e., Personalised Learning Plan). Exemptions may include noise-reducing/cancelling devices. A register of approved exemptions is maintained at the Student Office.**
- **NB: Students who have medical exemptions need to register with the Student Office**

Full Policy: [Mobile Phone Policy](#)

Nudgee Spirit & Grandstand

Presence at sporting events in support of your Nudgee brothers is a pivotal form of Nudgee spirit. It is not really about sport; it is about being with peers and being one of the famous '10,000 brothers' in support of the College. As Nudgee College students we understand that cheering practice and attendance on game days in support of our brothers is a privilege and not a right. It is our responsibility as current students to ensure that the grandstand is a fun, positive, and safe forum full of the famous blue and white spirit.

- [Nudgee Spirit - Expectations, Cheers and Songs](#)



Property

All boys are reminded about the care of furniture and facilities, avoidance of litter, non-interference with fire extinguishers, and, the general care for all College property. Students are liable for the cost of repair or replacement of any College property that is willfully damaged or damaged through inappropriate behaviour.

Saturday Sport Expectations

Saturday sport expectations - spectator:

- All seasons: full formal uniform

Saturday sport expectations - player

- Full uniform as articulated for that particular sport
- Students must arrive in full playing gear, or Nudgee training attire. In winter seasons, any jumpers or jackets should be Nudgee-branded

School Bags

The College has two bags that are available for use:

- The College backpack for classroom materials
- The College Sports bag for PE and co-curricular activities.
- Only these bags should be used when travelling to and from school and during the school day.
No other bag is permitted.
- Students will be issued two individualised bag tags to label their bags

Skateboards / Motorbikes / Scooters

Students are not allowed to bring skateboards, motorbikes, scooters, or other related modes of transport to school.



Social Media

If it is online and can be posted or deemed as content that has been created, then it is covered by the Social Media policy.

- Students and families are expected to comply with all national legislation and age limits as they apply to accessing and utilising Social Media.
- Students are expected to respect the dignity of all.
- Students are expected to give due respect to the reputation and good name of the College in all their dealings with each other and members of the broader community.
- Students are expected to comply with the lawful requirements of all social networking sites.
- Students are expected to accept responsibility for any damage to the College, self, or others as a result of social media misuse.
- When using social media, students are expected to ensure that they:
 - Respect the rights and confidentiality of others;
 - Do not impersonate or falsely represent another person;
 - Do not bully, intimidate, abuse, harass, or threaten others;
 - Do not make defamatory comments;
 - Do not use offensive or threatening language or resort to personal abuse towards each other or members of the Nudgee Community;
 - Do not post content that is considered disrespectful, hateful, threatening, pornographic, or incites violence against others;
 - Do not harm the reputation and good standing of Nudgee or those within its community;
 - Do not film, photograph, or record members of the Nudgee community without express permission of the College or use film, photographs, or recordings without express permission of the above.

Full Policy: [NC Social Media Policy](#)

Tattoo Policy

- Other than in circumstances of significant cultural custom, the College recommends that families strongly discourage boys from having tattoos. Any boy, who for whatever reason, has a tattoo is required to keep it covered at all times while at school, playing sport, and swimming in the pool.

Full Policy: [NC Student Tattoo policy](#)



Uniform, Hair, Jewellery and Grooming

Uniform:

Summer Uniform (Terms 1 and 4)	Winter/Formal Uniform (Terms 2 and 3, special occasions)
Khaki short-sleeved shirt Navy shorts or pants Navy College socks Black leather shoes Black belt	Blazer White Nudgee shirt Navy shorts or pants Navy College socks Black leather shoes Black belt
Nudgee wide-brimmed hat (5-6) or Nudgee cap (7-12) is compulsory all year round	
Nudgee College bag	

Note:

- Full uniform is worn to and from the College daily, until the end of PC. PE uniform may NOT be worn except for Year 5 and 6 students on their designated days
- Caps that have been supplied by sport or other activities are not part of the daily uniform
- Jewellery is not to be worn with the College uniform. Earrings, body piercings, chains, wrist bands, or rings are unacceptable (this includes plastic clear studs).
 - A crucifix may be worn under the uniform on a chain around the neck
 - A watch may be worn

Hair:

The College policy is that the boys' must keep their hair at an acceptable length, and it is expected that all students keep their hair neat and tidy every day - by adhering to the following -

- At the back, hair must be cut evenly and clearly above the collar.
- The fringe must be cut to a length above the eyebrows (not kept longer) and simply brushed to the side.
- At the sides, hair must be cut and worn so that the ears are completely exposed. Sweeping longer hair behind the ears is unacceptable.
- Shorter hair must be the same length at the back and sides and blended gradually into the longer hair on top.



-
- Students should be clean-shaven at all times.
 - It is expected that hair be kept completely as the student's natural colour and that no artificial colouring, bleaching, dying or streaking of hair is done. The way the hair is worn should not draw attention to the student.
 - Hairstyles which are deemed unacceptable for students at Nudgee College include - but are not limited to - bald, buzzcut, dreadlocks or modern mullet (see below).
 - **The College retains the right to decide if a haircut is inappropriate.**

Boys are not permitted to cut their own hair or have their hair cut by another student.

Full Policy: [Uniform, Hair and Grooming Policy](#)

What to do, when

The below policy will provide information about the following:

- Students either absent or late to school
- Feeling unwell
- Requiring an early departure from the College.
- Lost property
- Borrowing clothing
- Engaging College counsellor / Psychologist

Advice: [What I do when advice](#)

Policy Review

Reviewed by the Dean of Students (February 2026). Ratified by the College Leadership Team.

The next review is scheduled for January 2027
