

2026

# OUR COLLEGE MISSION

**PEOPLE THE FOCUS**

**LEARNING THE PURPOSE**

**CHRIST THE WAY**

## OUR COLLEGE LOGO



The name “Pacific” reminds us of our proximity to the ocean. “Pacific” can also remind us of calmness. Magellan gave the ocean its name when relieved to find calmer water after experiencing the treacherous seas around Cape Horn at the tip of South America.

At Pacific Lutheran College, we are reminded of the peace that Christians experience through their faith in their Creator and Saviour God.

In our logo, the significant cross reminds us of Jesus, the Son of God, and the One whom Christians worship as the Light of the World. The sextant, an important navigational instrument, placed behind the cross reminds us of the new directions lives can take through faith in Jesus Christ. The cross and sextant together form the outline of a boat with sails on a calm and peaceful sea.

Life is a journey of discovery and Christians look to Christ as their Captain and Navigator. At Pacific Lutheran College, we celebrate the peacefulness of our surroundings, the beauty of sand and blue skies (also depicted in our logo) and calmness that comes through our Christian faith.

## OUR COLLEGE AIMS

AT PACIFIC WE AIM TO SUPPORT YOU AS A LEARNER ACROSS ALL DIMENSIONS OF LIFE

FOUR PILLARS OF LEARNING			
Learning to Be	Learning Together	Learning to Learn	Learning to Know and Do
<p>Knowledge of self in relation to God, universe and world as an interdependent, intellectual, social, moral, creative, ethical and spiritual being</p> <ul style="list-style-type: none"> <li>• A spiritual person knowing God as Creator, Saviour and Helper</li> <li>• A valued, gifted and unique child of God who respects the human dignity of all and is environmentally aware and responsible</li> <li>• Socially, emotionally, ethically, intellectually, physically, creatively, spiritually and morally equipped</li> <li>• Filled with awe, wonder and curiosity. Critically aware of the construction and use of human knowledge. Positively futures orientated</li> <li>• Globally and culturally aware, respectful and valuing of diversity including indigenous cultures and history</li> </ul>	<p>Growing, learning, working and living with people with increasing co-agency</p> <ul style="list-style-type: none"> <li>• Respectful, empathetic and valuing of different perspectives</li> <li>• Strengths orientated</li> <li>• Collaborator</li> <li>• Relational and restorative</li> <li>• Leader and organiser</li> <li>• Listener and communicator</li> <li>• Advocate and supporter</li> <li>• Mentor, coach and facilitator</li> <li>• Mediator and negotiator</li> </ul>	<p>Possessing dispositions and skills to be an effective lifelong learner</p> <ul style="list-style-type: none"> <li>• Confident, motivated growth mindset</li> <li>• Knowledgeable, skilled and able to form connections within and across areas of learning</li> <li>• Creative, critical and complex thinker</li> <li>• Risk taker, flexible, resilient, adaptable, creative and generative</li> <li>• Investigator, problem former and solver</li> <li>• Innovator and designer</li> <li>• Reflective and self-directed</li> </ul>	<p>Becoming a highly skilled knowledgeable person who makes high quality contributions to community</p> <ul style="list-style-type: none"> <li>• Knowledgeable, skilled and generative</li> <li>• Quality producer</li> <li>• Service orientated</li> <li>• Productive and informed user of technology</li> <li>• Enterprising</li> <li>• A responsible, moral and ethical decision maker</li> <li>• Positive, purposeful citizen who makes valuable contributions to family, local, national and global communities and the enhancement of the environment</li> <li>• Maintain wellbeing of self and others</li> </ul>

# CONNECTION TO COMMUNITY AND COUNTRY

## ARTIST STATEMENT

This artwork was commissioned by Pacific Lutheran College to celebrate the school's 25 year history while intertwining it with the rich heritage of the Kabi Kabi people, as well as the College's past, present and future. It embodies themes of community, faith, kindness, excellence, compassion, knowledge, collaboration, courage and the aspiration to be our best.

The depiction of the Mooloolah River at the centre symbolises my family's deep and unbroken connection to Country and represents the four main river systems on Kabi Kabi land: the Mooloolah, Maroochy, Noosa and Mary Rivers. These waterways serve as a shared connection that unites us all as we live, work and play on Kabi Kabi Country. The water signifies renewal and the River of Life paying tribute to Kabi Kabi history and honouring the journey of students at Pacific Lutheran College.

Community symbols throughout the artwork reflect the College as a vibrant and supportive community - comprising students, teachers, parents and everyone who supports and guides with faith, kindness and wisdom. The three main community gathering circles or symbols represent the Past, Present and Future, the Father, Son and Holy Spirit and the collective community of students, teachers, staff and parents.

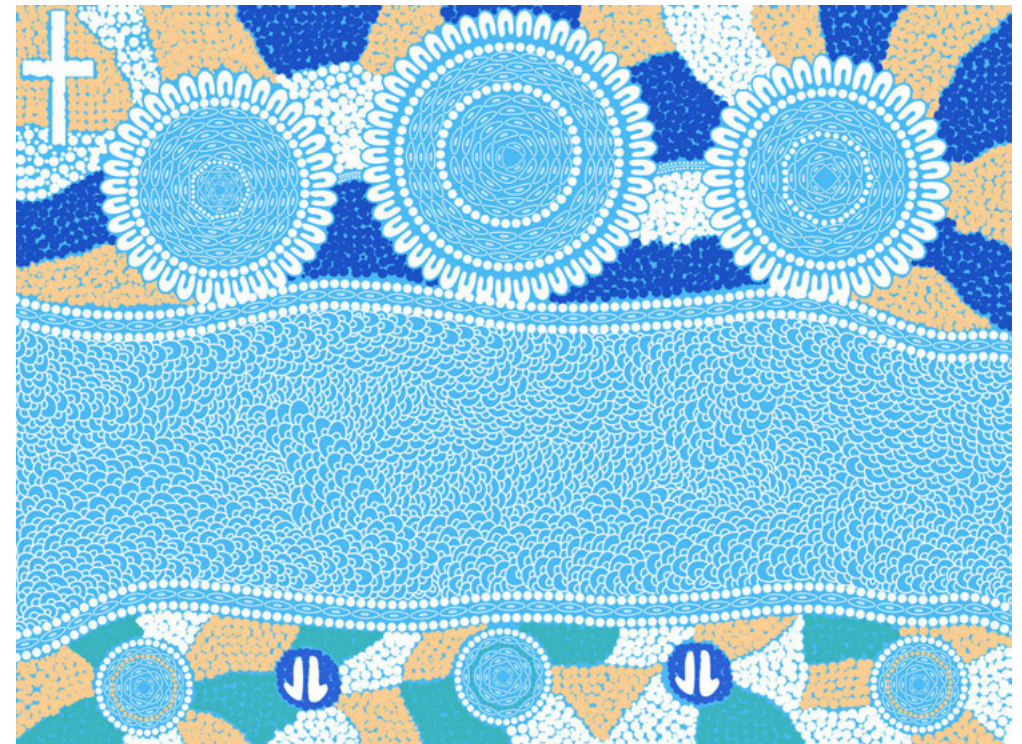
I incorporated my signature Shell Midden mark making to acknowledge the area's cultural significance. The inclusion of the Cross at the top signifies Pacific Lutheran College's core values, unwavering faith and steadfast dedication to education - embodying respect, excellence and gratitude for those who have supported us along life's journey. The Shell Midden elements pay homage to Sea Country and the beautiful environment we inhabit along the Coast. These ancient deposits of shell remnants serve as reminders of the abundant feasts enjoyed by our ancestors and the gatherings where wisdom and knowledge were passed down, paralleling the guidance offered by teachers today.

Middens symbolise caring for Country and caring for each other - embodying community, support, love and stewardship. Additionally, near the midden piles and circles at the bottom of the artwork, there are kangaroo markings and symbols, representing the area's totem animal and emphasising a sacred connection to local wildlife, while the dots on the background symbolise our footprints and journeys making the vibrations on the land. I've used the colours of the College's logo and used colour to represent the cabbage tree palm which is significant in the area.

Overall, this artwork celebrates the values of respect, perseverance and gratitude, inspiring students to honour their personal journeys and the community that shapes them.

## ABOUT THE ARTIST

Zartisha Davis was born and raised in Nambour and comes from the Mooloolaba Chilly family, the Mooloolah and Meridan Plains people and the Red Belly Black Snake clan. Mooloolaba meaning place of the Red Belly Black Snake, her songlines also include belonging to the Cobble Cobble people of the Barangaam Nation also known as the caretakers of Bonyi (Bunya Mountains) and the Butchulla people from K'Gari on her fathers side. Zartisha most recently was a finalist in the 2024 National Contemporary Art Prize in Canberra, the Macquarie Group Emerging Art prize in Sydney and locally was finalist in the Local Contemporary Art Prize and the Sunshine Coast National Art Prize. Locally you can find Zartisha as the current Artist in Resident at Sub Tropics Studios with SCCA and dancing with the Gubbi Gubbi dance troupe.



# JANUARY 2026

SUNDAY	MONDAY	TUESDAY	WEDNESDAY	THURSDAY	FRIDAY	SATURDAY
				1 New Year's Day	2	3
4	5 PLC Office Opens OSHC Opens	6 ELC Opens	7	8	9	10
11	12 Uniform Shop Opens	13	14	15 ALE Staff Retreat	16 New Staff Induction	17
18	19 New Staff Induction	20	21 Prep Orientation (1.30-2.30pm)	22 Prep Orientation (1.30-2.30pm)	23 Yr 1-6 Meet your Teacher (12.00pm) All Yr 7 & New 8-12 PCC Afternoon (1.30pm)	24
		←————— Staff Week —————→				
25 Thread: Equality and Social Justice	26 WEEK 1 Australia Day Public Holiday	27 Academic Year Commences Yr 6-12 Commencement Service The Events Centre, Caloundra (6.30pm)	28 New Student ID Photos	29 Yr 3-6 Swimming Trials Kawana Aquatic Centre	30 Prep-5 Commencement Service Cym (8.45am)	31

# FEBRUARY 2026

SUNDAY	MONDAY	TUESDAY	WEDNESDAY	THURSDAY	FRIDAY	SATURDAY
1  Thread: Equality and Social Justice	WEEK 2 2  Middle College Information Evening (6.00pm)	3  Yr 12 Leadership Day Music Information Evening (5.00pm) Yr 11 Information Evening (6.00pm)	4  Yr 8 Camp	5  Yr 3-6 Swimming Carnival Beerwah Aquatic Centre	6	7
8  Thread: Integrity	WEEK 3 9	10  Scholars' Assembly (8.30am) Yr 10 Information Evening (6.00pm)	11	12	13  Yr 7-12 Swimming Carnival Nambour Aquatic Centre	14
15  Thread: Integrity Yr 5-9 Music Camp	WEEK 4 16	17  FOP AGM (6.30pm)	18  10-12yrs District Swimming	19  13-19yrs District Swimming	20  Yr 7-12 Music Camp Departs (3:30pm)	21  Yr 7-12 Music Camp
22  Thread: Planning and Decision-Making Yr 7-12 Music Camp	WEEK 5 23  Yr 9 RITE Journey Departure (5.00pm) Yr 6 Leaders: GRIP Leadership Day	24	25	26	27	28

NOTES

# MARCH 2026

SUNDAY	MONDAY	TUESDAY	WEDNESDAY	THURSDAY	FRIDAY	SATURDAY
1  Thread: Planning and Decision-Making	WEEK 6 2	3	4	5  Yr 4-6 SCISSA Trial Game vs Suncoast	6  International Women's Day Breakfast (7.30am)	7
8  Thread: Interpersonal Competence	WEEK 7 9	10	11	12  Prep Vision Screening	13  Prep Vision Screening	14  Academic Scholarship Test
15  Thread: Interpersonal Competence	WEEK 8 16	17  Friends of Pacific (6.30pm)	18	19	20	21  Music Scholarship Test
22  Thread: The Cross and Resurrection	WEEK 9 23  NAPLAN	24  Prep-5 Parent Conferences	25  Kids Lit Quiz Prep-5 Parent Conferences	26  Yr 4-6 SCISSA Trial Game vs ILC & GCC Prep-5 Parent Conferences	27	28
29  Thread: The Cross and Resurrection	WEEK 10 30	31	NOTES			

# APRIL 2026

SUNDAY	MONDAY	TUESDAY	WEDNESDAY	THURSDAY	FRIDAY	SATURDAY
Thread: The Cross and Resurrection	WEEK 10		1 Senior College Conferences Yr 5 Camp	2 K-12 Chapel Yr 4-6 Gala Day 1 Term 1 Concludes	3 Good Friday	4 Easter Saturday
5 Easter Sunday	6 Easter Monday	7	8	9	10	11
12	13	14	15	16	17 Armidale Rugby Carnival	18 Armidale Rugby Carnival
19 Thread: LEA Value: Forgiveness Armidale Rugby Carnival	WEEK 1 20 Staff Day	21 Term 2 Commences	22 Yr 6-12 Anzac Day Chapel Yr 8 & 9 Conferences	23 Yr 6 & 7 Conferences	24 Yr 3-12 Cross Country	25 ANZAC Day
26 Thread: LEA Value: Forgiveness	WEEK 2 27	28	29	30	NOTES	

# MAY 2026

SUNDAY	MONDAY	TUESDAY	WEDNESDAY	THURSDAY	FRIDAY	SATURDAY	
31  Thread: LEA Value: Forgiveness	WEEK 2				1	2	
3  Thread: LEA Value: Quality	WEEK 3  Labour Day	4	5	6	7  Yr 4-6 SCISSA Trial Game vs Suncoast vs MFAC	8  Duke of Edinburgh (Gold)	9  Duke of Edinburgh (Gold)
10  Mother's Day  Thread: LEA Value: Quality  Duke of Edinburgh (Gold)	WEEK 4  Duke of Edinburgh (Gold)	11	12	13	14  9-19yrs District Cross Country	15	16
17  Thread: LEA Value: Courage  PLC Open Band/ Strings Workshop (10.30am)  Open Day	WEEK 5  18	19  Yr 7&10 Vaccinations  Friends of Pacific (6.30pm)	20  Senior Production 'Our Town'  National Simultaneous Story Time	21  Senior Production 'Our Town'	22  Senior Production 'Our Town'	23  Senior Production 'Our Town'	
24  Thread: LEA Value: Courage	WEEK 6  25	26  Staff and Prep-12 Photo Day	27	28	29  Caloundra Show Day	30	

← Yr 4 Camp →

# JUNE 2026

SUNDAY	MONDAY	TUESDAY	WEDNESDAY	THURSDAY	FRIDAY	SATURDAY
	WEEK 7 1	2 Yr 11 2027 QCE Information Evening (6.00pm)	3	4 Yr 4-6 SCISSA Trial Game vs SCGS vs NCC	5	6
7 Thread: School Boundaries	8 WEEK 8 Yr 3-7 Author Visit	9 Yr 3-7 Author Visit	10 Yr 3-6 Athletics Carnival	11	12 Duke of Edinburgh (Silver 1)	13 Duke of Edinburgh (Silver 1)
		← CBSQ Jnr Secondary Basketball Yr 9-10 →		← FPS International Conference →		
		← Yr 10 Exams →				
14 Thread: Religious Community Duke of Edinburgh (Silver 1)	15 WEEK 9 Prep-2 Cross Country Carnival	16 Kayaking Marathon Championship Yr 10 2027 Subject Expo (5.30pm) Yr 11 2027 Subject Expo (6.30pm) Friends of Pacific (6.30pm)	17	18 Yr 4-6 Gala Day 2 Pacific Ensembles Concert Venue 114 (5.00pm)	19 Duke of Edinburgh (Silver 2)	20 Duke of Edinburgh (Silver 2)
					← Yr 12 Retreat →	
21 Thread: Religious Community Duke of Edinburgh (Silver 2) Yr 12 Retreat	22 WEEK 10	23	24 Term 2 Concludes K-6 Chapel Yr 7-12 Athletics Carnival	25 Staff Day	26 Staff Day	27
28	29	30	NOTES			

# JULY 2026

SUNDAY	MONDAY	TUESDAY	WEDNESDAY	THURSDAY	FRIDAY	SATURDAY
			1	2	3	4
5	6	7	8	9	10	11
12 Thread: Family Support	WEEK 1 13 Staff Day	14 Term 3 Commences	15	16	17	18
19 Thread: Family Support	WEEK 2 20	21 Prep-5 Parent Conferences Friends of Pacific (6.30pm)	22 Cocurricular Photo Day Prep-5 Parent Conferences Yr 6-12 Parent Conferences	23 Prep-5 Parent Conferences	24	25
26 Thread: Positive Family Communication	WEEK 3 27	28 Yr 12 Tertiary Information Evening (6.00pm)	29	30	31	
← Yr 7 Camp →						

# AUGUST 2026

SUNDAY	MONDAY	TUESDAY	WEDNESDAY	THURSDAY	FRIDAY	SATURDAY
30  Thread: Caring Neighborhood	WEEK 8 31  Yr 12 Mock Exams Yr 6 Canberra Tour Departs					1
2  Thread: Positive Family Communication	WEEK 4 3  ← 13-19yrs District Athletics →	4  Yr 8 & 9 2027 Subject Expo (5.30pm)	5  9-12 Yrs District Athletics	6	7  Grandparents Day  ← Senior Schools Cup (Volleyball) →	8
9  Thread: Other Adult Relationships  Senior Schools Cup (Volleyball)	WEEK 5 10	11	12	13  Yr 4-6 SCISSA Trial Game vs MFAC vs GCC	14  Yr 2 Outdoor Learning Day	15
16  Thread: Other Adult Relationships	WEEK 6 17	18  Friends of Pacific (6.30pm)	19  K-2 Author Visit	20  Yr 4-6 SCISSA Trial Game vs SCGS	21	22
23  Thread: Caring Neighborhood	WEEK 7 24	25	26  Regional Athletics	27  Yr 12 Music Night Regional Athletics	28	29
			← Book Week →			

# SEPTEMBER 2026

SUNDAY	MONDAY	TUESDAY	WEDNESDAY	THURSDAY	FRIDAY	SATURDAY
Thread: Caring Neighborhood	<b>WEEK 8</b>	1	2	3	4	5
			← Yr 12 Mock Exams →		Staff Day (QCAA Confirmation TBC)	
			← Yr 6 Canberra Tour →			
6 Father's Day Thread: Caring School Climate	<b>WEEK 9</b> 7	8 Kayaking Sprint Championships Friends of Pacific (6.30pm)	9	10 Prep-2 Athletics Carnival	11	12
		← Yr 12 Mock Exams →				
13 Thread: Caring School Climate	<b>WEEK 10</b> 14	15	16 Yr 10 Vaccinations	17 Snr Ensembles Concert Yr 4-6 Gala Day 3	18 Term 3 Concludes K-12 Chapel	19
				← CBSQ Seniors Basketball (Yr 11-12) →		
20 CBSQ Seniors Basketball (Yr 11-12)	21	22	23	24	25	26
27	28	29	30	NOTES		

# OCTOBER 2026

SUNDAY	MONDAY	TUESDAY	WEDNESDAY	THURSDAY	FRIDAY	SATURDAY
				1	2	3
4  Thread: Community Values Youth	<b>WEEK 1</b>  5  King's Birthday	6  Term 4 Commences	7	8	9	10
		← Yr 11 Exams →				
11  Thread: Community Values Youth	<b>WEEK 2</b>  12	13  Middle College Orientation Day  Yr 6-9 Parent Orientation Evening (5.30pm)	14	15	16	17  20 and 10 Year Reunions
	←		← Yr 9 Camp →			
	←		← Yr 11 Exams →			
18  Thread: Youth as Resources	<b>WEEK 3</b>  19	20  Yr 12 2027 Information Evening (6.00pm)  Friends of Pacific (6.30pm)	21	22  Yr 4-6 SCISSA Trial Game vs GCC vs NCC	23	24
	←		← Yr 9 Camp →			
25  Thread: Youth as Resources	<b>WEEK 4</b>  26	27	28	29	30  Pacific Pulse	31
	←		← Yr 12 External Assessment →			
				← CBSQ Junior Basketball (Yr 7-8) →		

# NOVEMBER 2026

SUNDAY	MONDAY	TUESDAY	WEDNESDAY	THURSDAY	FRIDAY	SATURDAY
1  Thread: Cultural Competence CBSQ Junior Basketball (Yr 7-8)	WEEK 5 2  Instrumental Tutors Concert (3.30pm)	3  Instrumental Tutors Concert (3.30pm)	4  Yr 5&6 Instrumental Concert	5  Instrumental Tutors Concert (3.30pm)	6  Yr 3 Camp	7
8  Thread: Cultural Competence	WEEK 6 9  Yr 3&4 Strings Concert	10  Yr 3&4 Strings Concert	11  Prep Family Connect Evening (5.00pm)	12  Yr 4-6 Gala Day	13	14
15  Thread: Christmas Gospel	WEEK 7 16  Yr 12 External Assessment	17  Friends of Pacific (6.30pm)	18  Jnr Ensembles Concert	19  Yr 4-6 Sports Awards (12.00pm) Yr 7-12 Sports Awards (2.00pm) Yr 12 Graduation Venue 114, Lake Kawana (6.30pm)	20  Yr 12 Farewell Chapel (8.30am) Yr 12 Formal (4.30pm)	21
22  Thread: Christmas Gospel	WEEK 8 23  Yr 12 External Assessment	24  Yr 10 Exams	25  Yr 9 Leadership Day Rite Journey Homecoming (5.00pm)	26  Uniform Shop Close Prep-2 Swimming Carnival	27  K-5 Carols (5.00pm)	28
29  Thread: Christmas Gospel	WEEK 9 30  Prep-5 Closing Service (8.45am)	NOTES				

# DECEMBER 2026

SUNDAY	MONDAY	TUESDAY	WEDNESDAY	THURSDAY	FRIDAY	SATURDAY
	WEEK 9	1  Term 4 Concludes Yr 6-12 Closing Service The Events Centre (6.30pm)	2	3	4	5
			← Staff Days →			
6	7	8	9	10	11	12
13	14	15	16	17	18  PLC Office Close ELC Close	19
20	21	22	23	24  Christmas Eve	25  Christmas Day	26  Boxing Day
27	28	29	30	31  New Year's Eve	NOTES	



## PACIFIC LUTHERAN COLLEGE

Woodlands Boulevard, MERIDAN PLAINS 4551

PO Box 992. CALOUNDRA 4551

General Enquiries: 5436 7300 | [admin@pacluth.qld.edu.au](mailto:admin@pacluth.qld.edu.au)

Student Absentees: 5436 7303 | [absentees@pacluth.qld.edu.au](mailto:absentees@pacluth.qld.edu.au)

[pacificlutheran.qld.edu.au](http://pacificlutheran.qld.edu.au)