

# Parent Handbook

## Junior School 2025



# Table of Contents

|   |    |
|---|----|
| Section 1 – Welcome to Northside                        | 4  |
| Teaching from a Christian Worldview                     | 7  |
| History of the College                                  | 8  |
| Associations & Affiliations                             | 8  |
| College/Church Relationship                             | 9  |
| Statement of Faith                                      | 9  |
| Governance  | 9  |
| Section 2 – Connecting at Northside                     | 10 |
| Information for Junior School                           | 11 |
| College Reception and Visitors                          | 11 |
| Staying in Touch – College Communications to Parents    | 11 |
| Staying in Touch – Parent Communications to the College | 12 |
| Contact Details and Medical Information                 | 12 |
| A Change in Parental Situation                          | 12 |
| Volunteering  | 12 |
| Lost Property   | 12 |
| Student Photos (and media)                              | 12 |
| Before and After School Supervision                     | 13 |
| Before school   | 13 |
| After school  | 14 |
| Student Names – Official Documentation                  | 16 |
| College Café  | 16 |
| School Lunches  | 17 |
| First-Aid, Medication and Health Matters                | 17 |
| Uniform Shop  | 19 |
| Student Transport & Road Safety                         | 20 |
| Section 3 – Student Matters                             | 22 |
| Junior School Pastoral Care                             | 22 |
| Junior School Leadership                                | 23 |
| Student Wellbeing                                       | 24 |
| Attendance  | 25 |
| Absentee Management                                     | 25 |
| Student Discipline and Conduct                          | 26 |
| Expectations  | 26 |
| Award System Guidelines                                 | 27 |
| Bridge Builders U-Turn Process                          | 27 |
| U-Turn Levels   | 27 |
| Section 4 – Teaching & Learning                         | 32 |
| Technology and Learning                                 | 33 |
| Section 5 – Co-Curricular                               | 37 |
| Junior School Campus Life                               | 37 |
| Booth House - Blue .....                                | 38 |
| Elliot House - Green .....                              | 38 |
| Wesley House - Yellow .....                             | 38 |
| Graham House - Red .....                                | 38 |
| Excursions, Incursions and Camps                        | 38 |
| Excursions and Incursions                               | 38 |
| Camps   | 39 |
| Parent Assistance                                       | 39 |
| Missions and Fundraising                                | 39 |
| Junior Library  | 40 |
| Junior School Activities                                | 40 |
| Instrumental Music Program                              | 40 |
| Class Instrumental Program (Years 4 – 6)                | 40 |
| Private Instrumental Program (Years 1 – 12)             | 40 |

|                                   |    |
|-----------------------------------|----|
| Student Birthdays                 | 41 |
| Grandparents Day                  | 41 |
| End-of-Year Celebrations (annual) | 41 |

## Section 1 – Welcome to Northside

# Welcome from the Principal

Welcome to our Parent Handbook for Junior School.

In 1985, a small group of parents entrusted their children to the educational care of Mrs Shirley Mead, our first teacher. She was described as “dedicated to God and children”. I believe this is still a hallmark of our staff. I firmly agree with the words of Dr Michael Carr-Gregg (Australian Psychologist), who recently commented that one telling factor for a positive school environment is “the quality of staff and their relationship with their students”. I invite you to keep the staff in your prayers this year as they teach and come alongside your children.

Northside is a truly extraordinary school. We have witnessed consistently high academic results, proven pathways to employment through the Vocational Education program and a breadth of co-curricular offerings. However, it has not only been teachers and students who have helped form our College culture. Past and present parents have had the wonderful attitudes of being contributors to a community rather than consumers of a product and this has blessed the College greatly.

Whether you are already a good friend or in fact a brand new family to Northside, I commend the College Handbooks to you. We trust that the protocols outlined here, which have been revised and improved over the years, will offer you and your family helpful guidelines to ensure a smooth-running and enjoyable year.

Character through Christ,



Mr Leighton Kuss  
**College Principal**



## Philosophy and Aims Statement

Based on the Alice Springs (Mparntwe) Education Declaration December 2019

*NCC (the College) is dedicated to the pursuit of excellence, to the development of the individual as a whole and the service of God and others. We aim to develop "Character through Christ" (the College motto) in a caring environment through the cooperation and involvement of staff, students and their families.*

*The educational philosophy of the College is based on the recognition that the skills and attitudes of the students are to be developed and used to honour God, and to serve Him purposefully and creatively. This involves the development of a Christian worldview that equips students to live authentic Christian lives in the context of Australian society.*

*This purposeful service of the Creator should ultimately be expressed in the students' lives through life-long participation in, and contribution towards, the use of their giftings for collective, social benefit. NCC acknowledges that our students can only learn to serve God and others in a true spirit of excellence by experiencing an education set within a school that has a strong learning community as its foundation. In this type of environment, we strive to develop partnerships that extend beyond the scope of immediate family-student-teacher relations into broader partnerships with businesses, community agencies and the wider community.*

*The College seeks to provide a holistic education, integrating the spiritual, academic, social and physical aspects of training from a Biblical perspective empowering students to reach their potential.*

*The College works in partnership with parents to assist them in bringing up their children in the Christian faith. Whilst a Board of Directors associated with [NE Church](#) (a member of the Australian Christian Churches) governs NCC, it does not seek to promote any one denominational doctrine other than that outlined in the College's Statement of Faith. The College staff and students attend a wide variety of denominations. The College seeks to work in conjunction with them for the benefit of the students.*

*Further, our College has developed a strong organisational culture based on shared, Godly values. These have the potential to give our students a greater sense of meaning and purpose, a greater sense of belonging and safety, and higher levels of motivation and achievement.*





## Foundational Values include:

- A living, personal relationship with God through faith in Jesus Christ
- The Scriptures as God’s wisdom and revelation for life
- Love of one’s neighbour as oneself as evidenced in a servant heart
- A commitment to excellence, doing all to the glory of God
- Self-discipline and the ability to delay gratification
- Worship as a way of life through adoration and giving of ourselves
- Attainment of core academic, vocational and general knowledge
- Developing, as a Christian, self-confidence, a sense of optimism, strong self-esteem and resilience
- A capacity to exercise Godly judgments, enact responsible behaviours and to support social justice framed within Christian understandings
- Be active and informed citizens, with sound understandings of civic and prayerful respect for our leaders, legal and government systems and processes
- Grasp the importance of a healthy and balanced lifestyle, which honours all scriptural imperatives

## Learning to Learn

- Critical thinking and problem-solving skills
- Good communication and interpersonal skills in working in collaboration with others
- Wise stewardship of our environment, time, finances and all personal and shared, global resources
- Develop basic skills of numeracy and English literacy, enabling students to function within society at an appropriate level
- Foster skills of enterprise, giving students an ability to be flexible and adaptable in their future career pathways
- Cultivate strategies and a passion for life-long learning for all students, especially our students with special needs. These may be either students with impairments or learning disabilities or students demonstrating outstanding giftedness in one or more academic, sporting or leadership areas
- Enable students to obtain high standards of knowledge, skills and an effective positive link to all disciplines covered in the eight National Key Learning Areas
- We believe that it is imperative that we proactively teach values to our students in the light of God’s command to do so.

*“Fix these words of mine in your hearts and minds; tie them as symbols on your hands and bind them on your foreheads. Teach them to your children, talking about them when you sit at home and when you walk along the road, when you lie down and when you get up.” Deuteronomy 11:18-19*



### *Teaching from a Christian Worldview*

The term 'worldview' is the sum total of our beliefs about the world, the 'big picture' that directs our daily actions and decisions. We believe that our primary task in life is to discover what is true and to live in step with that truth. The basis for the Christian worldview is God's revelation in Scripture and stands on the words of Jesus "I am the Way, the Truth and the Life".

- Each worldview is characterised by the way it answers three questions:
  - Where do we come from, and who are we?
  - What has gone wrong with the world?
  - What can we do to fix it?
- The Bible gives three answers to these:
  - Creation
  - Fall
  - Redemption
- Within the framework of Christian Education, it is intended that students will develop a robust Christian worldview. Based on the truths of Scripture, this worldview is considered to provide students with an understanding of their role, value, and meaning in the physical universe. It is intended that students will become equipped to recognise the worldviews and the philosophical underpinnings of the knowledge and understandings of their various disciplines of study. Students will be taught to understand the origin of these other philosophies and worldviews, appreciate the impact of social and cultural values on their development, and juxtapose these disciplinary worldviews against their own Christian worldview. In this way, they may seek to make sense of ideas and disciplinary knowledge from within a scriptural framework. The authority of the Christian worldview is deemed absolute and not relative.
- God's answers to these fundamental life questions frame a biblical worldview on any subject from family life to education, from politics to science, from art to popular culture. Thus genuine Christianity is not only a relationship with the Lord Jesus Christ; it is a way of seeing and comprehending all reality. It is a worldview, at the centre of which is Jesus the Christ, the Logos, the rational pattern of the universe. He is "the Way, the Truth and the Life", the origin and end of all things, the Alpha and Omega. Nothing has meaning apart from Him. He is the agent of all creation and the Lord over all creation, from the human soul to the vastness of the cosmos. (John 14:6; Psalms 2, 6,110; Phil. 2:5-11). He is the Arbiter and Repository of absolute truth. Truth is found only in relationship to God and His revelation.
- We hold these understandings as paramount and foundational. They underpin our entire curriculum and how we teach it. They enable us to make sense of the world we live in and order our lives more rationally. Further, they enable us to understand forces hostile to our faith, thereby equipping us to evangelise and defend Christian truth as God's instruments for transforming culture.
- In an age of moral relativism and postmodernism, we seek to teach students what our Christian worldview is, why we believe it and how we should defend it. It is our business and privilege to develop each student's unique creative potential in response to the gifts God has placed in them, based on the understanding that His truth is not relative but absolute and must be appropriated and applied in our particular historical and socio-cultural context. Since there are absolutes, scientific and religious truth can be integrated into a unified belief system. Our commission is to live out God's truth in the unique historical and cultural conditions of our age.

### *History of the College*

- NCC is an independent (self-governed), co-educational Christian School. The school, which commenced in 1985, was begun to provide a Christ-centred education for Christian families. It was founded on the notion that parents (of the state or the school) are given the responsibility by God of 'training a child' and that the school should be an extension of the home to fulfil that responsibility. It was also founded on the belief that the Christian family should be in fellowship with other believers (church) and that the home, the church and the school should work in partnership and in harmony of values to educate the child.
- Key ingredients in the make-up of the College are:
- Local church oversight
- Christian staff who view teaching as an opportunity for ministry unto the Lord
- Shared Christian values and shared tasks between the school and home
- God-honouring curriculum
- The discipleship of children ("growing up into Jesus Christ" Eph 4:15)
- Training children for their futures and callings
- Service to the wider body of Christ and the wider community
- A commitment to excellence

### *Associations & Affiliations*

- NCC is a member of the [Association of Independent Schools in Queensland \(ISQ\)](#) and [Associated Christian Schools \(ACS\)](#).
- The College has inter-school sporting contacts through the North District Primary Sports Association and the Primary and Secondary [Christian Schools Sports Associations \(CSSA\)](#). In 2025, Northside joined the Northern Independent Schools Sporting Association (NISSA) to compete against other schools in sport.





### *Collegel Church Relationship*

- [Nexus Church](#) is a significant congregation with a broad program of meetings, missions and outreaches into the community. Northside Christian College is part of its ministry to the wider body of Christ.
- A harmonious and supportive relationship between the College and Church is imperative. Effective communication, care and consideration, and teacher vigilance are the keys to maintaining this relationship.

### *Statement of Faith*

- The College is founded upon, and continues in reliance upon, the following statements:
- We believe that the Bible is God's Word. It is accurate, authoritative and applicable to our everyday lives.
- We believe in one eternal God who is the Creator of all things. He exists in three Persons: God the Father, God the Son and God the Holy Spirit. He is totally loving and completely holy.
- We believe that sin has separated each of us from God and His purpose for our lives.
- We believe that the Lord Jesus Christ as both God and man is the only One who can reconcile us to God. He lived a sinless and exemplary life, died on the cross in our place, and rose again to prove His victory and empower us for life.
- We believe that to receive forgiveness and the 'new birth', we must repent of our sins, believe in the Lord Jesus Christ, and submit to His will for our lives.
- We believe that to live the holy and fruitful lives that God intends for us, we need to be baptised with water and empowered by the Holy Spirit.
- We believe that God has individually equipped us to achieve His purpose for our lives successfully: to worship God, fulfil our role in the church, and serve the community in which we live.
- We believe that God wants to heal and transform us to live healthy and prosperous lives to help others more effectively. We believe that our eternal destination of either Heaven or hell is determined by our response to the Lord Jesus Christ.
- We believe that the Lord Jesus Christ is coming back again as He promised.

### *Governance*

- The Directors of Northside Christian College govern the College, appointed by the leadership of [Nexus Church](#).
- The College Board is not involved in the day-to-day management of the College. This responsibility is delegated to the Principal, who must manage the College within the board's guidelines.
- The College Board of Directors appoints an Audit and Risk Sub-Committee, which monitors the financial performance and financial position of the College. It makes recommendations to the board on matters such as the Annual Budget and fee levels.

## Section 2 – Connecting at Northside

# Welcome from the Head of School

### Welcome to Junior School!

This Parent Handbook has been created as a practical and supportive guide for families with children in Prep to Year 6. We hope you find it helpful as you navigate the daily rhythms and routines of school life. Whether you are new to Northside or have been part of our journey for a while, we trust this resource will provide clarity, confidence, and connection throughout the year.

Our Junior School spans the early, wonder-filled days of Prep through to the growing independence of Year 6. Children's interests, needs and experiences evolve at every stage – and we shape our academic and pastoral programs to support and reflect these changes.

We are committed to nurturing the whole child – academically, emotionally, physically and spiritually – as they grow and learn how to live well in community with one another. Our hope is that each student thrives in a safe, stimulating and Christ-centred environment that encourages curiosity, character and love.

Our College is founded on the belief that each child is uniquely created in the image of God, loved deeply by Him, and full of potential and purpose. We see education as a partnership with parents, working together to guide children toward lives of wisdom, faith, and service. The truth of the Gospel shapes all that we do – from how we teach and learn to how we treat one another to how we navigate challenges and celebrate growth.

In Prep to Year 2, we focus on sparking wonder and joy in learning, helping children explore the world around them, their Creator, and the community they are connected to. As they move into Years 3 to 6, we support them in developing strong learning habits, personal responsibility and healthy, God-honouring relationships that prepare them for the next stage of their journey.

At the heart of all we do is relationship and community. We deeply value the partnership between home and school, and we believe that connection and character are keys to a flourishing community. Our staff are committed to providing quality care and guidance, walking alongside each child and family with grace, prayer and understanding. We strive to model the love of Christ in our classrooms, conversations, and community life.

We are also incredibly proud of the leadership shown by our older students. Through our PALS and CHUMS programs, our Year 5 and 6 students play a special role in mentoring our younger students – being a friendly face, a helping hand, and a big brother or sister along the way. These peer relationships reflect the culture of care and servant-hearted leadership we want every child to experience.

*Every child is known, loved and valued by God - and by us. It is our great privilege to partner with you as we nurture, guide, and support children in growing into all they are created to be in Christ. Welcome - we're so glad you're here.*

Yours in Christ,

*CDallinger*

Mrs Cinaea Dallinger  
**Head of Junior School**



# Information for Junior School

## College Reception and Visitors

**Opening hours for all School Receptions are 8:00 am – 4:00 pm**

**All visitors** to the College must sign in and out at College Reception (main office) and display a Visitor's Pass during their visit.

## Staying in Touch – College Communications to Parents

### Email

Important College communication with parents is sent via email and generally placed in our College App.

If you would like to contact Junior School Reception, please email [js.reception@northside.qld.edu.au](mailto:js.reception@northside.qld.edu.au)

### Parent Portal

The Northside parent portal includes the desktop version (Parent Lounge) and mobile App (Parent Orbit App). Parents receive an email from "helpdesk" with their login details. The parent portal gives you access to academic reports, parent and emergency contact details, College newsletter, planner, parent-teacher interview bookings, student timetable, medical details, attendance, health room visits, events and school links. 'School links' are where assessment calendars, College handbooks, policies and forms are located. Important parent notifications are regularly communicated, so please ensure you have your notifications set to 'on' for the Parent Orbit app. *Instructions on how to download the app and set up notifications are [here](#).*

### Calendar:

Our College Planner is downloadable on the calendar page <https://www.northside.qld.edu.au/calendar>

### MyNorthside

MyNorthside provides links to all services available at the College - [www.northside.qld.edu.au/mynorthside](http://www.northside.qld.edu.au/mynorthside)

The College newsletter is issued each month via email, and the Parent Portal. These newsletters are key sources of information for students and parents about upcoming events and activities.

### Social Media

The College also communicates through the following social media accounts:

Facebook: <https://www.facebook.com/northsidechristiancollegebrisbane/>

Instagram: <https://www.instagram.com/northsidechristiancollege/>

Youtube: <https://www.youtube.com/user/NorthsideQldEduAu>

Parents are encouraged to download the Parent Orbit App, and visit the College website and Facebook pages to keep in touch with regular updates and additions.



The image shows a promotional banner for the Northside App. On the left is the Northside Christian College logo. To its right is a blue banner with a white 'NEW' ribbon and the text 'Northside App'. Below this is a smartphone displaying the ParentOrbit App interface. To the right of the phone, the text 'ParentOrbit App' is followed by a list of features, each with an icon: a bell for notifications, a person with a checkmark for absences, a calendar for diaries, two people for interviews, a medical cross for medical info, a dollar sign for payments, a document for reports, and a person with a checkmark for sign-on.

**ParentOrbit App**

- Receive and acknowledge notifications.
- Acknowledge current and submit future absences.
- View electronic diary for each student.
- Book parent-teacher interviews.
- Review and update your child's medical information and parent contact details.
- Accept and make payments for events and other activities.
- View and download academic reports.
- Secure single sign-on option.

## Staying in Touch – Parent Communications to the College

Two-way communication between parents and teachers regarding students is essential; however, a Northside teacher's first priority lies with their professional duties, i.e., attending and teaching classes and fulfilling their responsibilities to their students with duty of care.

All staff and teachers need to be ready for class by 8:20 am. Please arrange meetings outside this time by contacting [Junior School Reception](#). Brief discussions are possible at the beginning and end of the school day, by appointment via direct email with your child's teacher or via Junior School Reception (if your child's teacher does not have a prior duty or commitment).

If important information needs to be conveyed at the beginning of the day, please get in touch with your child's classroom teacher via email or deliver a note via your child.

### Contact Details and Medical Information

The College relies on parents to provide accurate contact/emergency details, as well as student medical information at the time of enrolment. Please notify the College immediately of any changes by updating your details, or any student medical reports on the parent portal (Parent Lounge/Parent Orbit app).

### A Change in Parental Situation

If your family circumstances change (e.g., in the event of a separation), please also let us know, by contacting [JS.Reception@northside.qld.edu.au](mailto:JS.Reception@northside.qld.edu.au) or [Linda.Hobson@northside.qld.edu.au](mailto:Linda.Hobson@northside.qld.edu.au). This enables the College to partner with you in fully supporting your student/s.

### Volunteering



College parents are an integral part of our Junior School community and their contribution is highly valued. There are many opportunities to assist, such as in class, excursions, sports days, the College Café and special event days. Regular working bees are held where parents can also assist the grounds staff.

**If you would like to volunteer, please visit the [College website](#) to register your interest.** If you would like to help out with classroom activities, (e.g., reading), please also contact your student's classroom teacher.

For more information contact [Ann-Margaret Rose](#) (Parent Volunteer Coordinator)

### Lost Property

**Please ensure your student's school items are clearly named.** Lost Property is held on the upper verandah in B Block. Please check regularly for any lost articles. Unnamed articles will be cleared at the end of each term.

### Student Photos (and media)

Class, co-curricular and family photographs are taken annually and made available for order using a pre-paid ordering system.



The College may take photographs, video footage, or audio of staff, students, parents and volunteers during normal school activities for learning and promotional purposes. These photographs and footage are also often used to inform parents, the wider community and government bodies for assessment/moderation purposes and promotional or fundraising purposes.

If you do not wish your student to have their photo taken, please ensure you notify the College by contacting the relevant School Reception.

## Outside School Hours Care, including Vacation Care (OSHC)

All services are based in the College Hall. **Bookings are essential.** For detailed information on booking and fees, visit the [College website](#). Standard operating hours are:

**Before School Care:** 6:30 am – 8:30 am Mon - Fri

**After School Care:** 3:00 pm – 6:00 pm Mon – Fri

**Vacation Care:** 7:30 am – 6:00 pm Mon – Fri (*selected weeks of the school holidays*)

For more information contact the OSHC Coordinator: P 3353 7340 or <mailto:oshc@northside.qld.edu.au>

## Before and After School Supervision

**Before School Supervision**

Staff supervision of students begins at 8am in the morning and duty-of-care remains with parents until this time.

Students should not be playing basketball, handball, soccer etc or using any College facilities unless a staff member is present. We also ask that you accompany your children if using the Alley Café and church pavilion before school.

### Before school

Staff supervision of students begins at 8am in the morning and duty-of-care remains with parents until this time. Students should not be playing handball or soccer etc or using any College facilities unless a staff member is present. We also ask that you accompany your children if using the Alley Café and church pavilion before school.

## After school

When the bell goes at the end of the school day, students should make their way to the oval undercover area or to Flockton Street to be collected by parents before 3:30pm. Any Junior School students on campus at this time, will be escorted up to the front of Main Admin where they can be safely supervised. The same regulations of using College facilities under staff supervision apply after 3:30pm.

# After School Supervision

### JUNIOR SCHOOL

**3:30 PM OSHC (Outside School Hours Care)**

Students should be collected in person by their parents from the Oval or wait at the designated, supervised location on Flockton St.

Any junior school students not collected by 3:30 pm will be accompanied by a staff member to the College main reception. If still not collected by 4pm, they will be taken up to OSCH, where an afternoon fee will be charged and the usual OSCH procedures then apply.

PICK UP BY 3:30 PM

OSHC 4 PM

MAIN RECEPTION AFTER 3:30 PM

DUTY OF CARE

### SECONDARY SCHOOL

**3:30 – 4:30pm in the Secondary School Library**

When the bell goes at the end of the school day, students should make their way home, or to their co-curricular activity or to the library. Any secondary students on campus at this time, will be asked to move up to the library where they can be safely supervised. The same regulations of using College facilities under staff supervision apply after 3:30pm.

SIGN IN AND OUT

STUDY SPACE

NO MOBILE PHONES

## Arrival

Parents are to ensure their student is prepared for the day by being at school before 8:25 am and ready to begin class at 8:30 am.

- Years 1 – 6: Students can be dropped from 8:00am, put their bag away outside their classroom and then line up in their designated areas in A & B block courtyards when the whistle blows.
- Prep: Students can be dropped off at the Prep playground from 8:00 am.

## Departure

Consistency with pickup helps to keep your student safe. Please note that this time is for pickup; not for play, and no balls are to be used.

- Students are best picked up directly from the pickup zone on Flockton Street or the oval. Supervision is not provided in other areas.
- As the Prep day ends shortly before Junior School, parents collect their Prep child first.
- Once collected, student are under parental care.
- Please ensure that your arrangements do not involve unsafe practices such as requiring students to:
  - Enter car parks
  - Cross the entry driveway without parental supervision
  - Wait in areas that are out of bounds or unsupervised
- At 3:30 pm, the staff member on duty will move all remaining Junior School students to directly outside College Main Admin.
- At 4:00 pm, any students who are still waiting will be taken to OSCH.



# AFTER SCHOOL PROCEDURES

- SUPERVISION**

Junior School students should be accompanied by and *actively* supervised by their parents on the oval and when crossing/entering the car park.
- NO BALL SPORTS**

For the consideration of vehicle and pedestrian traffic flow, no social ball sports are permitted on the oval after school.
- ROAD SAFETY**

*Pedestrians:* when crossing Flockton St, please make use of the pedestrian crossing. *Drivers:* please adhere to the 10km/h speed limit around campus.
- SCHOOL RULES APPLY**

All normal school rules apply after school, such as footwear should always be worn, no climbing of trees or fences etc.
- OUT OF BOUNDS**

The Year 3-6 playground and the bleachers (seating area on the eastern side) are out of bounds.
- TRAFFIC FLOW**

Car Park 1 (nearest the oval) should be used for short-term parking only until 3.30 pm and may be halted to allow priority exit for the school buses.
- RESPECT**

Please be respectful and obey the instructions of the staff members on duty, whose job is to ensure the safety of all community members.

Thank you for partnering with us to keep our college community safe.

## Lateness/Leave During the Day

Students are not permitted to leave the College campus during the day for any reason without parental permission, and in Junior School, they are to be accompanied by a responsible person (parent/guardian, approved older sibling).

### What happens if my student is late to school?

- If students arrive after 8:30 am, they are to go to Junior School Reception upon arrival to sign in. Parents may sign in at Junior Reception on behalf of their student.

If students are not signed in, they will be recorded as absent for the day, and parents will be contacted to verify the absence.

### My student has an appointment during school hours. How do I go about letting the College know?

- Where possible, advance notice is greatly appreciated by emailing Junior Reception and the Class teacher.
- If parents are collecting student for only part of the day (eg for an appointment), they are to sign their student out/in at Junior School Reception when departing and on their return.

### What happens if my student becomes unwell during the day?

If students become sick during the day they will be referred to Student Reception (Health Room) by their teacher. Parents will be contacted by Student Reception if necessary. Students are not permitted to contact their parents directly.

## Extended Absence

The Principal may grant an exemption from attendance (for longer than 10 school days) in certain circumstances. Circumstances where an exemption from schooling for a child or young person may be appropriate may include diagnosis of terminal medical condition, sporting representation, illness or hospitalisation for a prolonged period of time, 'care' responsibilities, mental health condition, extended travel, or family reasons.

## Student Names – Official Documentation

NCC reports to several bodies and as such must ensure that student data including names, is correct. Whilst the College understands that family situations may change and that this may bring some difficulties in terms of using a surname or given name, we are unable to use informal or preferred names for students on official or formal documents. For further information, please contact Junior School Reception.

## College Café

The [College Café](#) is open to parents, staff and students between 7:30 am and 8:10 am, offering breakfast. The current College Café Lunch Menu is available for parents from the College website [here](#).

- For Junior School students, the College Cafe operates for lunch only
- Preps can begin to use the College Café from Term 2

## Dietary Restrictions and Allergies

Please ensure you update your student's medical conditions to reflect any food allergies or dietary requirements. This information should be submitted through the Parent Portal.

The College asks ALL parents to consider students with severe allergies to nut products and refrain from including any foods containing nuts in lunch boxes.

We strongly recommend that no lollies, chocolate bars or other junk foods be included in your child's lunch or morning tea.

## School Lunches

Students are encouraged to develop healthy eating habits. In Junior School we have “Munch and Crunch” at 9:30am. Please send along healthy foods to enable young bodies to gain the nutrients essential for growth and health. Avoid foods that are high in sugar, fat or salt. The following are some suggestions:

### Morning tea

- Fruit, dried fruit, vegetables, yoghurt, cheese

### Lunch

- Sandwiches with a healthy filling or salads
- Drinks are unnecessary as water is always available at drinking taps/fountains.



## First-Aid, Medication and Health Matters

### Health Room

- **The College Health Room operates between 8:00 am – 3:30 pm daily (except in case of emergencies)**
- First-aid, medication and health matters are primarily handled by the College Health team, located opposite the Lecture Theatre. At least one First-Aid Officer is assigned to the Health Room during school hours.
- First-aid kits are located in the health room and in various locations throughout the college. They are made available for off-site activities such as sports, excursions, and camps.
- As a general rule, if a student is unwell enough to need antibiotics or other such medication, the student should not be sent to school.

### Contagious Conditions

- A table showing the exclusion periods (“Prescribed Periods”) for contagious conditions view the following [Queensland Health Department link](#). Parents and students must observe all of the prescribed periods for contagious conditions shown in the table.

The College will notify parents where it suspects a student has contracted a contagious condition. The College may exclude the student from College activities, pending the determination of whether or not the student has a contagious condition.

### Head Lice

The College undertakes the responsibility to minimise the risk of students contracting head lice while at school. Parents are responsible for inspecting the hair of household members and notifying the College if their student is affected. The College requests that students affected do not return to school until suitable treatment has begun.

Parents are advised through an [Alert Notice](#) of any outbreak in classrooms and the College expects immediate follow-up action and treatment if necessary.

## Medical Permissions and Authorisations

Parents authorise the College to arrange at their expense, for necessary urgent medical treatment for a student including as the case may be, on camps, excursions and overseas trips.

### Medication

- No medication (whether prescription or non-prescription) may be kept by a student or in his/her school bag except with written consent of the College. In special circumstances, the College may consent to students carrying emergency medication.
- All unused medication is to be collected by the parent of the student at the end of term otherwise it will be thoughtfully disposed of.
- It is parents' responsibility to ensure all medication is labelled by a Pharmacist.

### Non-Prescription Medication

The College will generally not administer non-prescribed medications (such as analgesics and over-the-counter medications) to students.

The College may administer Paracetamol to those students whose parents have given approval on the completed Student Medical Form upon enrolment.

### Prescription Medication

Should medication be prescribed for a student by a medical practitioner during school or school-approved activities, parents must make a written request and complete the necessary Administer Medication Authority Form (available on Parent Portal).

### Emergency Medication

Emergency medication is kept at the Health Room and administered by designated First-Aid Officers.

Asthma 'puffers' may be kept by the class teacher for students in Prep to Year 2 or, with the consent of the Deputy Head of Junior School, and on the student's person from Years 3 to 12. Emergency Ventolin is also kept at the Health Room and included in the College First Aid Kits.

The College may also consent (upon written approval) to a student with serious medical conditions carrying necessary medication, such as inhalers, EpiPens and glucose testers.

### Action Plans

Health Room personnel and Junior School Leadership will liaise with parents of students with serious medical conditions regarding the development of an Action Plan. An Action Plan is an individualised outline ordinarily prepared by the student's medical practitioner setting out the serious medical condition, matters for the College to consider to minimise risk of harm to the student, and appropriate steps for the College in the event of an emergency.

### Feeling Unwell

If a Junior School student feels unwell during class time or sustains a minor injury (e.g. small scratch, graze, headache etc), he/she should inform the classroom teacher, who will then determine whether to issue a First-Aid (Red) Card to allow the student to attend the Health Room.

If a Junior School student feels unwell or sustains a minor injury during break times, he/she should inform the teacher on duty, who will then determine whether to issue a First-Aid (Red) Card to allow them to attend the Health Room.

On presentation, the Health Room First-Aid Officer will make an initial assessment as to whether:

- a medical emergency response is required

- to contact the nominated parent or contact person and request that the student be collected; or
- to admit the student to the Health Room for a period of rest and recuperation (20 mins)



emergency medical care if necessary.

The First-Aid Officer will assess whether the student is well enough to return to school activities or be placed into the care of the parent. The Health Room will contact parents. Students are not permitted to contact parents directly.

## Common Questions

### **What if I want to take my student to my family doctor or to the hospital myself?**

We understand that the care and attention of a family GP is often highly valued, and that in some instances the required medical care may not be of an urgent nature. In these cases, the College is more than happy to offer parents the option of collecting the student. In situations requiring more serious or urgent medical attention, the College reserves the right to call for

### **If an ambulance is called for my student, what will it cost?**

The College pays annual membership fees to Queensland Ambulance, which means that all students receive automatic ambulance cover for any school-related activities.

### **Where do I go to pick up my student if I have received a phone call informing that he/she is unwell, or if an ambulance has been called?**

Please proceed directly to the Health Room, unless advised otherwise.

### **What happens if my student requires further medical treatment?**

If your student requires further medical treatment following a school-related incident, please let us know by contacting Junior School Reception and your student's Class Teacher.

### **What happens if my student cannot walk up the stairs**

The College may provide students with a temporary lift pass in times of need, e.g. they are unable to climb stairs due to injuries. Please contact your student's teacher if there is a need to have a lift pass issued.

## Uniform Shop

### **Open Monday and Friday 7:30 am – 9:30 am, Wednesday 7:30 am – 9:30 am; 2:00 pm - 3:30 pm (Term Time)**

Opening times for the start of the school year will be advertised via the College website. Price lists are available from the Uniform Shop and on the College website. New uniforms are available only through the Uniform Shop (ordered via Flexischools or purchased in person). The Uniform Shop is located in J Block between the Junior School Oval and Playground. <https://www.northside.qld.edu.au/uniform>

### **Second-Hand Uniforms**

Good quality second-hand items are always in demand. Please remember to always include your name and Fee Account ID (for credit purposes) when re-selling. [Uniform Shop | Northside Christian College](#)

There is a Facebook page to connect families wishing to buy or sell good quality second-hand uniforms. The site exists only to connect buyers and sellers and there is no official governance.

The link to the group is: <https://www.facebook.com/groups/1909534185992674/?ref=share> or you can search 'NorthsideCC Everton Park Uniforms'. The page is a closed group administered by volunteer parents, so please be patient as requests for joining the group are processed.

For more information contact P 3353 7352 or visit <https://www.northside.qld.edu.au/uniform-shop>

## Student Transport & Road Safety

### College Buses

Parents are invited to apply for Bus Services annually (towards the end of the school year). College bus routes are finalised based on parent applications prior to the start of each school year.

For full and part-time bus use, costs are included in the annual school fee account. For casual bus use, fees are billed each term based on usage, and usually during the term breaks.

In signing an application for Bus Services, parents and students agree to the [Code of Conduct \(Bus Services\)](#). This Code of Conduct is available on the College website (<https://www.northside.qld.edu.au/bus-services>).



For more information contact [bus@northside.qld.edu.au](mailto:bus@northside.qld.edu.au)

### Bicycles

Students riding bicycles to the College are expected to obey the relevant road rules. This includes the requirement to wear approved helmets. Students must walk with bicycles through the College grounds, and they must be stored in the racks provided (on the oval near the Flockton Street entrance). Bicycles must be locked in the racks during the day.

### Safe Road Usage

Ensuring the safety of our students as they arrive and depart from school is paramount to us. With the increasing number of vehicles on the roads during these times, it becomes crucial for us as a community to work together to maintain a safe environment for everyone.



To facilitate this, we urge all parents and caregivers to adhere to the following guidelines:

- **Follow Designated Drop-Off and Pick-Up Zones:** Please utilise the designated areas allocated for drop-off and pickup. These zones are strategically placed to ensure smooth traffic flow and minimise congestion. Avoid stopping or parking in undesignated areas, as this can lead to unnecessary hazards.
- **Exercise Patience and Courtesy:** We understand that mornings and afternoons can be hectic, but exercising patience and courtesy goes a long way in maintaining order and safety. Allow ample time for drop-off and pick-up, and be considerate towards other parents, pedestrians, and school staff. We may have staff members assisting with traffic flow, particularly in allowing the school buses to depart.
- **Obey Traffic Laws and Speed Limits:** Adhere to all traffic laws and school-zone speed limits when driving in and around the school premises. Remember, the safety of our students is non-negotiable, and speeding or reckless driving poses a significant risk to everyone's well-being.
- **Stay Attentive and Vigilant:** Be vigilant of your surroundings at all times. Keep an eye out for pedestrians, especially students, when using the ring road and the drop-off and pick-up zones.
- **Educate Your Child on Road Safety:** Take the time to educate your student on road safety practices. Reinforce the importance of using our designated pedestrian crossings, looking both ways before crossing the street, and never darting out into traffic.

## Section 3 – Student Matters

### Junior School Pastoral Care

Pastoral Care is at the heart of everything we do in Junior School. We believe that every student is created in the image of God. From this standpoint, we aim to provide students with opportunities to find their true value and identity in Him.

As a Christian school, we are dedicated to teaching the whole student and supporting their spiritual, physical, emotional and academic needs. We place a high priority on student wellbeing, and fostering a sense of belonging and acceptance.

In Junior School, pastoral care starts in the classroom but is the responsibility of our whole community. Class teachers are supported by a Pastoral Care Coordinator, Chaplain, Specialist Teachers and the Deputy Head of Junior School.

Right from Prep, students are introduced to our CARE focus, Courtesy, Attitude, Resilience and Excellence. These character traits are taught explicitly in the younger years and complemented by the Bridge Builders Program which is run from Prep - Yr 6. Bridge Builders provides simple, faith-based skills that teach resilience and constructive, peaceful approaches in responding to conflict.

In addition, the Junior School has programs such as PALS and CHUMS which provide opportunities for older students to mentor younger students. This is especially important as students transition from Prep to Yr 1.

Through Chapel services, Christian Studies, daily devotionals, socialpreneurship and missions, students have opportunities to learn more about God and how to serve those around them.



## About Junior School

Junior School has three to four classes per level from Prep to Year 6. We aim to keep class sizes smaller in our lower grades and have four classes in Prep, Year 1 and Year 2.

There are approximately 580 students in 24 classes. Teachers are supported by specialist staff in Physical Education, The Arts, Futures Learning, Library, Spanish and Educational Support. Teacher aides are assigned to assist teachers with teaching/learning. We have full-time teacher aides in Prep.

Classes are located in three main teaching blocks in Junior School:

- Our Preparatory Centre caters explicitly for the early learning of Prep students
- A Block lower Primary (closest to Flockton Street) for Years 1-3 with the Endeavour Room for Educational Support
- B Block Upper Primary for Years 4-6, Junior School Reception with the Student Hub for Educational Support

## Working together

Teachers on each year level work closely together in planning, implementing and assessing the teaching/learning program in collaboration with our Teaching and Learning Coordinator (Junior School).

Teachers also provide oversight and pastoral care for students in their class and are responsible for close and effective communication with parents. Teachers regularly pray for their students, families and other staff. Teachers also work in collaboration with our Pastoral Care Coordinator to achieve the best outcomes for our students.

## Junior School Leadership

|   |                             |
|---|-----------------------------|
| Head of Junior School                           | <b>Mrs Cinaea Dallinger</b> |
| Deputy of Junior School                         | <b>Mr Sam Heylen</b>        |
| Junior School Coordinator - Teaching & Learning | <b>Mrs Jodie Beattie</b>    |
| Junior School Educational Support Coordinator   | <b>Mrs Sue de Jongh</b>     |
| Junior School Pastoral Care Coordinator         | <b>Mrs Jude Crank</b>       |
| Junior School Executive Assistant               | <b>Mrs Linda Hobson</b>     |

## Junior School Teaching Staff 2025

|        |   |
|--------|---|
| Prep   | Mrs Marina Hoehn<br>Miss Cindy Aylward<br>Mrs Belinda Hardie<br>Mrs Rachel Lomulder                     |
| Year 1 | Mrs Robin Bartels<br>Mrs Loretta Smith<br>Mrs Bronte Baird<br>Mrs Laura Elkins & Mrs Dayna Carfora      |
| Year 2 | Mrs Trish Bernhofen<br>Mrs Leanne Bignall/Mrs Beth Anderson<br>Mrs Alison Loukidis<br>Miss Louisa Meyer |
| Year 3 | Mrs Lauren Belz<br>Mrs Tricia Crimmins<br>Miss Tahlaya Drew   |
| Year 4 | Mrs Cheryl Bryers<br>Mrs Tafline Jones<br>Mr Michael Bannerman  |

|                               |   |
|-------------------------------|---|
| Year 5                        | Mrs Rachael Carter<br>Mrs Amanda Stay/Mrs Amelia Peter<br>Mrs Katie Voigt       |
| Year 6                        | Mr Anthony Devlin<br>Mrs Anita Maher/Mrs Kristen Sheehan<br>Mrs Rachael Woodrow |
| Physical Education Specialist | Mr Luke Hartwell<br>Mrs Megan Vincent   |
| Futures Learning Coordinator  | Mrs Marsha Spiker   |
| Music Specialists             | Mrs Cathy Cheel (lower Junior School)<br>Mrs Adele King (upper Junior School)   |
| Education Support             | Mrs Rachel Wheeler<br>Mr Jacob Clyburn  |
| Educational Enrichment        | Mr John Armstrong   |
| Language – Spanish            | Mrs Fiorella Naters   |
| Visual Arts/Design            | Mrs Katy Castle   |
| EAL/D                         | Mrs Katherine Maher   |

## Student Wellbeing

|                     |                                    |
|---------------------|------------------------------------|
| College Chaplain    | Mr Wayne Knipe                     |
| College Counsellors | Mrs Lisa Baker<br>Mr Josh Morrison |

## Daily Routine

Junior School (Years 1 – 6) commences at 8:25am and finishes at 3:00pm. The Prep day begins at 8:25am and ends at 2:45pm. The first bell is at 8:25am – students line up ready for class in the courtyards.

| Daily Routine                       | Monday to Friday           |
|-------------------------------------|----------------------------|
| Staff Devotions / Meetings          | 8:00am – 8:20am            |
| Morning Session<br>'Munch & Crunch' | 8:25am – 10:30am<br>9:30am |
| Morning Tea                         | 10:30am – 11:00am          |
| Middle Session                      | 11:00am – 12:30pm          |
| Lunch                               | 12:30pm – 1:30pm           |
| Afternoon Session                   | 1:30pm – 3:00pm            |
| Prep**                              | 8:25am - 2:45pm            |

| Junior School Weekly Events |   |
|-----------------------------|---|
| Wednesday                   | Assembly (even weeks)<br>Chapel (odd weeks) |
| Fridays                     | Year 4 - 6 Sport                            |

## Attendance

Northside Christian College recognises that every day of school attendance contributes to a student's learning and that maximising school attendance enhances academic outcomes.

Parents have a legal responsibility to ensure their school-age child is enrolled and attends school under s176(1) of the [Education \(General Provisions\) Act 2006](https://education.qld.gov.au/initiatives-and-strategies/initiatives/every-day-counts-for-parents-and-community). <https://education.qld.gov.au/initiatives-and-strategies/initiatives/every-day-counts-for-parents-and-community> In addition, and according to the College's Terms and Conditions of Enrolment, parents agree to make every effort to ensure their student is not absent from school without leave being granted. The College is required to record student attendance and has a responsibility to respond to instances of irregular attendance.

Students at Northside are required to attend a minimum of 85% of scheduled school days. This attendance requirement includes sporting carnivals and other official College activities such as camps and excursions.

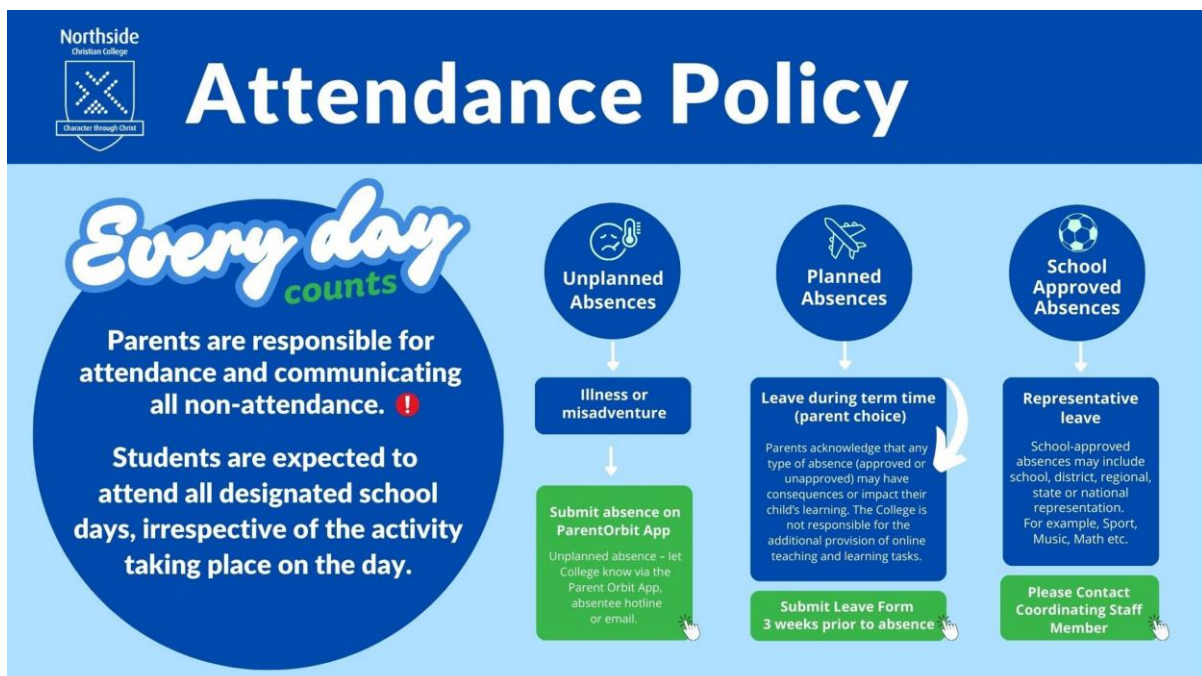
## Absentee Management

If students are absent, parents are required to notify the College by 9:00 am by:

- Phoning the Student Absentee Hotline – 07 3353 7388
- Phone Junior School Reception – 07 3353 1266 or [js.reception@northside.qld.edu.au](mailto:js.reception@northside.qld.edu.au)
- Notifying the College via the Parent Orbit App (available 24 hrs)

Where possible, advance notice of the absence is greatly appreciated. If the College does not receive notification, parents will be contacted to verify the absence. Please note:

- If the absence is more than one day a phone call is required on each day
- A doctor's certificate is required for **three (3) or more** consecutive days' absence



## Student Discipline and Conduct

**RESPECT, RESPONSIBILITY AND RELATIONSHIPS** are the three pillars of the community and incorporate the College values, CARE and Bridge Builders:

College Values: Faith, Learning, Excellence, Character, Community

CARE: Courtesy, Attitude, Resilience, Excellence

Bridge Builders: Calm down, Make friendly choices, Make an agreement

We aim to build "Character Through Christ": actively seeking change in students through knowing God's plan for Christian living.



## Expectations

At Northside, we believe that Behaviour Education is a vital part of discipling students. We don't assume that students always know how to behave in different settings and part of our role is to be intentional about teaching expectations. The 3R's document, outlines student expectations for behaviour to ensure learning and teaching can be effective and so students can participate positively within our school community.

Through connection and relationship, classroom teachers spend time explicitly teaching these expectations to students and they are reinforced at Assemblies and Chapels.



## Northside 3R's



### 1. Respect

1. We listen carefully and follow instructions.
2. We leave an area clean and tidy.
3. We take care of belongings, buildings, furniture and grounds.
4. We are respectful to staff, visitors and students.
5. We are in classrooms only with a teacher.



### 2. Responsibility

1. We do the right thing even when no one is looking.
2. We wear correct uniform.
3. We report dangerous or harmful situations to an adult.
4. We use digital devices responsibly.
5. We come properly prepared for the day.



### 3. Relationship

1. We take turns and share.
2. We are courteous and considerate.
3. We use our hands and feet to help – not hurt.
4. We use kind, respectful words and don't gossip.
5. We try to resolve conflicts using Bridge Builders strategies.

## Award System Guidelines

**In Junior School, Pastoral Care is formed on two major strands: an Award Scheme and Restorative Strategies.**

The aim is to emphasise positive, preventative measures that help establish and applaud good and acceptable behaviour.

Faith  
Learning  
Excellence  
Character  
Community

**Class Awards** - achievable for a wide range of activities within school life and recorded by the Class Teacher:

The award system reflects what is valued in Junior School. Specific characteristics and behaviours are encouraged:

- Respect: Shows respect for self, others and property
- Responsibility: Accepts responsibility for own actions
- Relationships: Displays care and compassion

**Year Level Awards (Merit Bars)**- *\*\* Our current reward system is under review, and once finalised, a new system will be introduced and shared.*

## Bridge Builders U-Turn Process

We believe that the most effective correction occurs when it is immediate, easy to understand and in the context of relationship. Through instruction, encouragement and the appropriate consequences, we believe that students can turn their behaviour around.

For inappropriate behaviour choices, students receive **Reminders, Reteaching of Expectations** and **Restorative conversations** from the classroom teacher. If the behaviour persists or is of a serious nature, students complete a U-turn card during a breaktime.

The goal of the Bridge Builders U-Turn process is to help students reflect and learn from their mistakes. This is achieved through a restorative process with the class teacher or the Pastoral Care Coordinator for more serious behaviors.

## U-Turn Levels

### White Card

- White cards are to support respectful behaviours both inside and outside the classroom.
- Students complete an age-appropriate page which is linked with **Bridge Builders** language and posters in classrooms.
- White cards are a classroom level behavioural resource that enables the teacher to understand and reflectively listen to what might be driving student behaviour, empathise with a student's concern, share their (the teacher's) concern and collaboratively practice a solution that builds relationships and supports learning.
- White cards are completed with the student during lunch time. (Approx. 10-15 mins)
- Parents are notified that their student has completed a White card and it is emailed home.
- If a student requires more than two White cards from the classroom teacher within a **two week** period, it may be escalated to a Yellow Card with the Pastoral Care Coordinator.

### Yellow Card

- Yellow cards are for either repeated behaviours, or more commonly, defiant or disrespectful behaviour warranting this level of response.
- Students complete a Yellow card at lunch time with an allocated staff member
- Parents are notified that their student has completed a Yellow card and it is emailed home.

### Orange Card

- If a student requires more than two Yellow cards within a term, it may be escalated to an Orange card.
- Orange cards are also for any significant behaviour that warrants this kind of response.
- Students complete an Orange card at lunch time with an allocated staff member or during their withdrawal from normal classroom activities.
- Parents are notified **prior** that their student will be completing an Orange card and it will be emailed home for follow up parent support.

## Wellbeing

While a student is in the care of the College, the welfare of students is the responsibility of all staff members. In Junior School, the classroom teacher plays a pivotal role with this as they have daily contact with students and are able to build connections and establish a good relationship with them.

In addition to classroom teachers, we have a Fulltime Junior School Pastoral Care Coordinator who supports students and also staff.

The College employs qualified and registered Counsellors who are available to provide strategic, short-term or ad hoc counselling support for students during term time in school hours. At Northside students also have access to a Chaplain who is available to provide spiritual support through conversation and prayer. **In Junior School, students can access the school counselling service through a referral process that involves parental permission.**

### CARE Focus

To further support the wellbeing of students in Junior School, the CARE program is used as an underpinning focus to develop character through Christ and teach social skills. The character development component is based on the four areas of Courtesy, Attitude, Resilience and Excellence.

Northside Junior School incorporates a well-being program called Bridge Builders. Bridge Builders is a Biblically based emotional regulation, conflict resolution, antibullying, and social and emotional program.

| CARE Program   |   |   |  |
|--|---|---|--|
| CARE program provides a framework for the development of Christ-like character, social skills and leadership skills. Each of the four attributes is represented by a slogan and a Scripture - along with character names and puppets in lower Junior School. |   |   |  |
| CARRIE COURTESY  | ABEL ATTITUDE   | RUBY RESILIENCE   | EDDIE EXCELLENCE   |
| <b>I Respect Others</b>  | <b>I Can Do It</b>  | <b>I Can Overcome</b>   | <b>I Do My Best</b>  |
| A courteous person is well-mannered, kind, cooperative, considerate.   | A person with a positive attitude is open to God, enthusiastic, persevering, teachable, responsive. | A person who is resilient is confident, positive, overcoming, assertive, self-accepting, faithful.  | A person striving for excellence is honest, responsible, punctual, tidy, focussed, diligent.                     |
| "So in everything, do to others what you would have them do to you."<br>- Matt 7:12  | "I can do all things through him who gives me strength."<br>- Phil 4:13                             | "Be strong and courageous. Do not be afraid or terrified because of them, for the LORD your God goes with you; he will never leave you nor forsake you."<br>- Deut 31:6 | "Whatever you do, work at it with all your heart, as working for the Lord, not for human masters."<br>- Col 3:23 |



## Out of Bounds

The following areas are out of bounds unless supervised by a teacher:

- Classrooms before and after school and during breaks
- Verandas (unless putting lunch boxes away)
- All carparks (unsupervised)
- NEXUS Auditorium and the Alley Café/Pavillion (unless supervised by a parent before school)
- Ovals and Basketball Courts
- Secondary School (unless attending instrumental lessons)
- Student Services (unless given a red nurse card by a teacher)
- Areas outside the College campus
- Playgrounds are out of bounds before 8:30am and after 3:00pm

## Mobile Phones and Smart Devices

Mobile Phones and wearables are to be used in accordance with the College's *Digital Policy - Student Responsible Use* (available on Parent Lounge)

- Students are not permitted to have mobile phones at school
- Students are not permitted to have smart watches that have 4G/5G capacity or camera capacity. Students are also not permitted to have smart watches or devices that connect via WiFi and enable messaging facilities.

**Students who are required to have a device with them for before school or after school travel to and from school must hand their device in immediately upon arrival to school, before 8.30am, to Junior School Reception. This device can be collected from the Junior School Reception at 3:00pm.**

## Uniforms

The appearance of students reflects on the College's reputation and sets a tone that aligns with College attitudes and behaviours which aspire for excellence. Students from Prep to Year 6 are expected to always be in full and correct school uniform as set out in the [Junior School Uniform Guidelines](#) located on the College website.

## General Guidelines

- All uniform items must be purchased through the College Uniform Shop, with the exception of footwear
- Please ensure all clothing is clearly named
- If your student is wearing a non-uniform item, a note should be sent to the class teacher explaining the circumstances

## Hats

All Junior School students must wear a Northside hat. The wearing of a College hat is essential while outdoors to minimise exposure to the sun. Students are expected to wear a hat:

- For any outdoor activity
- Morning tea
- Lunch
- Before/after School
- Excursions

Students who do not have a hat are to play in shaded areas. If a student does not consistently wear a Northside hat, parents will be contacted.

- **Prep – Year 2:** students are to wear the Legionnaire Cap
- **Years 3 – 6:** students are to wear the Wonder Hat with the Formal Uniform
- **Sport Uniform:** bucket hats should be worn with this uniform. The bucket hat is designed to be a more comfortable and practical to be worn when involved in sporting activities and is ONLY part of the sport uniform. Alternatively, students MAY wear the "Wonderhat" with the sport uniform as it offers superior shading.

## Footwear

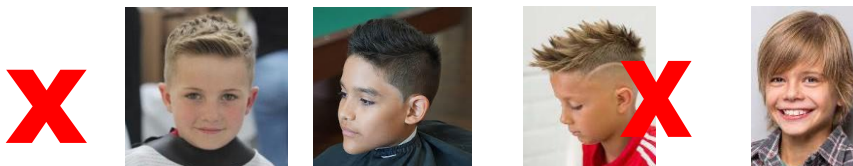
- **Formal Uniform** - traditional school shoe; black leather lace-up, polishable with medium heel
- **Sport Uniform** - Predominately white sports shoe with a protective and supportive sole and heel (e.g. running shoe or cross trainer) with white laces. Below are examples of acceptable sports footwear:



## Hair Standards

### Boys

- Hair is to be well-groomed and cut in a moderate style.
- Hair should be no longer than the collar, should not cover the ears and should not extend below the top of the eyebrows.
- The head is not to be shaven or closely shaven in part or whole, no undercuts. (Where blades are used, no cut below a 'number 3' is acceptable).
- Hair should be a 'blended' style, where there is no distinctive difference in length and no 'tracks'.
- Boys' hair is to be a natural colour.
- Boys' hair is not to be tied back, pushed back behind the ears and gel or any equivalent is not to be used to disguise a hairstyle that would otherwise be unacceptable.



### Girls

- Hair is to be well-groomed and cut in a moderate style.
- Shoulder-length or longer hair should be tied back using navy blue, white or bottle green ribbons or scrunchies
- Coloured clips are not permitted in the hair except for the Northside hair accessories available at the uniform shop. Navy headbands obtained from Uniform Shop are acceptable
- Girls' hair should be groomed as not to fall across the eyes and face. Hair can be held back with a 7mm tortoise-shell 'Alice' band purchased only through the Uniform Shop
- The hairstyle should be such that it does not interfere with the wearing of the school hat

- Girls' hair should be a natural colour

## **Jewellery Standards**

- One signet ring
- One watch
- Girls - one pair of earrings, plain thin silver or gold sleepers or studs (in earlobe only)
- Boys are not permitted to wear earrings
- Coloured nail polish is not be worn at school
- No make-up is to be worn at school

## **Acceptable Non-Uniform Clothing Guidelines**

These guidelines apply on occasions when school uniform is not worn – such as camps, free dress days, rehearsals, special performances etc. Students are expected to wear neat and modest clothing appropriate for the occasion.

### **Tops**

- Tops must cover the torso
- No low-cut, see-through or revealing tops
- No shoestring strap tops or singlets
- No shirts or T-shirts with inappropriate slogans

### **Footwear**

- For Workplace Health and Safety reasons, students must wear closed shoes
- Closed shoes / joggers are recommended on camps for safety reasons

### **Swimwear**

- All students are expected to wear a SunSmart shirt or a T-shirt over swimwear at swimming lessons

### **Modesty**

- Northside (formal) dresses should be knee length
- Uniforms should be of an appropriate fit
- If a student is inappropriately dressed on any such occasion, their Class teacher will notify the parents.

## Section 4 – Teaching & Learning

# Journeying through Junior School

## Learning in Prep

At NCC Prep, we are committed to nurturing each student’s natural curiosity and interest in learning. Our curriculum establishes strong foundations in Literacy and Numeracy through interactive, hands-on learning experiences aligned with early development. Teaching and learning activities recognise and support the different rates at which students develop physically, socially, emotionally, spiritually and intellectually.

Along with Christian Studies, English and Mathematics Programs, Prep students benefit from an integrated curriculum that combines several subject areas. This approach encourages connected learning experiences, helping our youngest learners to make meaningful links between subjects while fostering curiosity and engagement.

Our dedicated staff are passionate about guiding the holistic development of students. We believe the Prep year provides a vital opportunity for students to grow in confidence and character, setting them on a lifelong path to learning and discovery.

## Perceptual Motor Program (PMP)

During the early years of development, regular sensory and movement-based experiences enhance students’ successful engagement in learning. Prep and Year 1 students are involved in a Perceptual Motor Program. This program aims to develop perceptions of rhythm and timing, space, direction and position, developing students’ ability to successfully interpret external information and appropriately control body movements in response.

## Learning in Years 1 - 6

In the Junior School, we affirm each student as a unique and precious gift from God. We recognise that a student’s engagement with the world is shaped by the nurturing influence of parents, teachers, and the wider College community. Cultivating a rich, engaging and rigorous educational environment is foundational to our practice. Supporting student learning, teachers facilitate a variety of focussed and interactive learning strategies guiding students through each curriculum area.

The Junior School curriculum consists of study in the following areas:

- English
- Mathematics
- Science
- HASS (Humanities and Social Sciences – including History, Geography and Civics and Citizenship)
- Christian Studies
- Health and Physical Education
- Technologies
- The Arts
- Languages



Curriculum programs are designed around core pedagogical principles based on our five College values. Our programs align with the Australian Curriculum and are delivered from a Christian worldview. Lessons are thoughtfully designed with an understanding of how students learn most effectively and encourage students to

apply and extend their knowledge in complex, problem-solving tasks.

## Specialist Lessons

Our specialist teaching staff are experts in their respective fields and dedicated to inspiring and broadening students' learning experiences. Different year levels participate in a variety of weekly and term-focussed specialist lessons including: Health and Physical Education, The Arts (Music, Drama, Dance, Visual Art, Media Arts), Technologies, Languages (Spanish), and Library Studies.



### *Technology and Learning*

At Northside, we recognise that meaningful engagement with technologies is an essential component of education in the 21st century. Grounding in a Christian worldview, our approach aims to equip students to become responsible digital citizens who can navigate the digital world with wisdom and integrity.

Along with focussed Digital Technologies lessons, and extracurricular clubs, the general capability of 'Digital Literacy' is embedded across the curriculum. Students are supported in the development of both the practical skills required to use technology effectively, and an awareness of safe and responsible online learning. Technology is thoughtfully integrated to support educational outcomes and promote deeper student

engagement. From the early years, students access desktop computers and iPads in the classroom and in the Junior School Computer Lab. Beginning in Year Three, students transition from the Microsoft platform to the Google platform working on sets of Chromebooks. From Years Four to Six, each student is provided with one-to-one Chromebook access to enhance at-school learning experiences.

To guide and support the appropriate use of technology, the [College's Digital Policy – Student Responsible Use outlines](#) clear expectations for students. This policy, accessible via the [Parent Portal \(Parent Lounge\)](#), reinforces our commitment to fostering a learning environment where technology is used purposefully, respectfully, and in ways that contribute positively to each student's educational journey and wellbeing.

## Personal Technology and Devices

Mobile phones and other electronic devices are not required for learning; accordingly, contact during the school day between students and parents should be made through the College office.

In the Junior School, personal electronic devices are not required unless authorised in special circumstances, and as such, they are not to be brought to school. For those families who do require their students to carry a mobile phone, these students are to hand in their mobile phone to Junior School Reception **upon arrival** and may collect their phone at the end of the school day.

If it is necessary to contact parents during school hours, Junior School Reception will contact parents on behalf of the student.

## Junior School Educational Support

Junior School Educational Support is committed to providing comprehensive educational assistance through a Multi-Tiered System of Supports (MTSS), a framework endorsed by independent schools across Queensland.





Our Educational Support department comprises four key branches:

1. **Learning Support:** Assisting students who require additional help to achieve academic success.
2. **Enrichment:** Offering advanced learning opportunities for students who demonstrate high potential.
3. **English as an Additional Language and/or Dialect (EAL/D):** Supporting students for whom English is not their first language.
4. **Students with Disability (SWD):** Providing tailored support to students with identified disabilities

Our dedicated Educational Support team consists of **Educational Support Teachers** and **Trained Teacher Aides**.

This team collaborates closely with classroom teachers to ensure that all students receive the support they need to thrive academically and socially.

### **Learning Support**

Our Learning Support branch focuses on removing learning barriers and enhancing students' literacy and numeracy skills through:

- Short-term targeted interventions
- Individualised or modified learning programs across various curriculum areas
- In-class aide support
- Providing advice and tools to ensure reasonable adjustments are made across learning contexts

The classroom remains the primary environment for accessing year-level content, with all students receiving high-quality differentiated teaching. Many students benefit from in-class support provided by trained teacher aides. Some students may require specially targeted intervention lessons to revisit foundational concepts, enabling them to progress alongside their peers. Students' progress is regularly monitored, and support is adjusted accordingly.

### **Enrichment**

The Enrichment program aims to:

- Engage students with diverse problem-solving scenarios
- Broaden and deepen student understanding
- Foster growth, curiosity, and a thirst for knowledge
- Facilitate metacognitive practices (thinking about thinking)

Participation is determined through a collaborative referral process involving classroom teachers, parents, Enrichment teachers, and evaluation of test results. Students engage in various problem-solving methods and critical thinking practices, catering to diverse learning styles and encouraging perseverance.

### **English as an Additional Language and/or Dialect (EAL/D)**

EAL/D support is provided to students whose first language is not English and who require additional assistance to develop proficiency in Standard Australian English (SAE). Identification for EAL/D support involves gathering language background information from various sources to assess each student's English language learning progress. Some students from Culturally and Linguistically Diverse (CALD) backgrounds may not require EAL/D support if they are already proficient in SAE.

EAL/D lessons may be conducted individually or in small groups, focusing on:

- Conversational fluency
- Discrete language skills (e.g., decoding)
- Academic language proficiency



### Students with Disability (SWD)

Our SWD branch collaborates with students, parents, classroom teachers, and school leaders to ensure that students with disabilities receive reasonable adjustments to meet school requirements.

An example of our support is "The Cabin," a purpose-built space designed to assist students with sensory processing and regulation. Access to The Cabin is supervised by the Educational Support Coordinator, with arrangements made as needed. Classroom adjustments are embedded in daily teaching practices, ensuring inclusive education.

We also participate in the Nationally Consistent Collection of Data on School Students with Disability (NCCD), which reinforces our obligations under the *Disability Standards for Education 2005* and the *Disability Discrimination Act 1992* (DDA). This data collection helps us reflect the support and adjustments provided to students whose learning is impacted by disability. The College leadership provides guidelines to staff regarding their responsibilities in the NCCD process.

For more information contact [Sue de Jongh](#) (Coordinator – JS Educational Support)

## Homework

Homework activities are designed to complement, reinforce and enrich classroom learning while also introducing positive study habits. With a focus on Literacy and Numeracy practice, these short daily activities provide parents with valuable insight into concepts being explored in class, creating opportunities for meaningful home-school partnerships.

As students progress through the Junior School, they are encouraged to take greater responsibility for their learning, helping them to develop independence and confidence for lifelong learning habits.

Homework consists mainly of the following:

Prep – Year 2: Shared reading activities, spelling, writing and numeracy practice

Gathering of additional information or materials

Year 3 – Year 6: Independent reading daily, spelling, writing and numeracy practice

Completion of projects, basic research and introductory study habits

Homework should not exceed these maximum times:

Year 1 – Year 2 20 mins per night

Year 3 – Year 4 30 mins per night

Year 5 – Year 6 45 mins per night

*If your student is regularly spending more time on homework than recommended, we encourage you to reach out to their classroom teachers.*

## Junior School Assessment Schedule

At Northside Christian College, assessment is an integral part of the teaching and learning process. Within everyday teaching practice, ongoing formative assessment is utilised across all curriculum areas to monitor student progress, identify learning needs and inform instruction.

In addition, a range of summative year-level and school-wide assessments are regularly conducted. These assessments offer broader, comparable information on students' understanding and may include evaluations of student learning readiness, achievement in Literacy and Numeracy along with other curriculum areas and contribute to overall reporting on student progress. All Junior School students participate in these assessments as appropriate to their year level. In some instances, more targeted assessments may be used to gain a deeper understanding of a student's individual learning needs.

Students in Year 3 and Year 5 also participate in NAPLAN (*National Assessment Program - Literacy and Numeracy*), which is administered annually in March. These standardised assessments provide a snapshot of student achievement against national benchmarks.

## Academic Reports

Junior School students receive reports at the conclusion of:

- Term 1 – Interim Report
- Semester 1 – a full comprehensive report
- Semester 2 – a full comprehensive report

## Parent Teacher Interviews

Following the release of Term 1 Interim Reports, all parents are encouraged to meet with their student's classroom teacher to discuss their student's progress and development. These conferences provide a valuable opportunity to strengthen the home-school partnership and to better support each student's learning journey by fostering shared understanding and collaboration between parents and teachers. This meeting can be held face-to-face or through Google Meet.

Comprehensive written reports are provided at the end of both Semester 1 and Semester 2. Parent-teacher interviews may be arranged in conjunction with these reports. Additionally, meetings may be scheduled throughout the year as needed to support student learning and wellbeing.

## Section 5 – Co-Curricular

# Junior School Campus Life

## Student Leadership

All students in Junior School are encouraged to influence others by example. Each year, Student Leaders are chosen from Year 5 students. These students are responsible for leading the student body in various academic, cultural and sporting events throughout the year.



Formal leadership positions are:

- a male and female Captain and Vice-Captain of Junior School;
- a male and female House Captain from each of the four houses (Booth, Elliot, Graham, Wesley)

All Year 6 students participate in Leadership training during Year 6 camp and may then choose to participate in our PALS and CHUMS programs (as mentioned earlier):

- PALS (Year 6) is a program designed to have students lead activities and initiate play and learning opportunities for younger students
- CHUMS (Year 5) is a program assigning 'buddies' for younger students to give them a caring older 'brother' or 'sister'

## Sport

The Junior School sports program provides opportunities for students to explore a variety of team and individual sports and provides the foundation for future participation in school sport. A focus throughout these opportunities is to promote and instil in students the Junior School Sporting Values of Participation, Encouragement, Sportsmanship and Personal Best.

## Interschool Sport

All students in Years 4 – 6 participate in the Northern Independent Schools Sporting Association (NISSA) Gala Days throughout the year. This includes training sessions on Fridays as well as the three Gala Days per semester. Sports offered in Semester One are Basketball, T-Ball and Touch Football. In Semester Two are AFL, Netball and Soccer.



## Sporting Carnivals

Junior School students participate in swimming, cross-country and athletics carnivals at an Interhouse level, and CSSA (Christian Schools Sports Association) and District Carnivals.

Years 3 - 6 compete in all of these, while P -2 students participate in a Lower Junior Athletics Carnival.

## Swimming

Students in Years 1-6 have swimming lessons in Term 4. Fees for swimming lessons are covered within the Fee structure. Swim caps and swim shirts are compulsory for swimming classes. All students are assigned to one of four Houses from Year 1 through to Year 12:

- Booth - Blue
- Elliott - Green
- Wesley - Yellow
- Graham - Red

Family members belong to the same House. Students participate in House activities through sporting and educational events during the year. Coloured Polo shirts in House colours are available from the Uniform Shop.

### Booth House - Blue

Named after William (1829-1912) and Catherine Booth, the founders of the Salvation Army. The couple set out, in 1861, to take the Gospel to the streets of England to reach folk who did not conform to traditional church settings. They used street meetings, parades and marching bands to attract the poor, the destitute and the addicted with the love of Christ. Both were famous and fiery preachers and set their hearts on following God's leading regardless of much political and religious opposition.

### Elliot House - Green

Named after Jim and Elisabeth Elliot. Jim Elliot (1927-1956) was a missionary in Latin America, martyred for his faith in the unexplored parts of Ecuador. He and four companions were trying to bring the life-changing message of God's love to the Auca Indians. His wife, Elisabeth, continued to reach out to the tribe after his death.

### Wesley House - Yellow

Named after John Wesley (1703-1791) and his mother, Susannah. John Wesley led England's greatest spiritual awakening, convicting and redeeming a nation. He covered much of the country repeatedly on horseback in his pursuit of holiness, and preach at outdoor evangelistic meetings. Through her faith and zeal, Susannah raised John and brother Charles to be world-changers with the Gospel.

### Graham HOUSE - Red

Named after Billy Graham and his wife Ruth. Billy is widely known as a great evangelist of the twentieth century and preached in person in more than 80 countries. He reached millions with the Gospel through his extensive use of television and radio, focusing on proclaiming the Christian faith to non-believers. Billy was known for his integrity, humility, and delight in God's word, influencing lives and winning souls for Jesus Christ. Ruth was his confidante and companion in their Christian work.

## Excursions, Incursions and Camps

### Excursions and Incursions

These events extend and enrich students' understanding of studies undertaken in the classroom. They bring valuable "real life" experiences that the studentren remember. The costs for all excursions are covered within the

fee structure.

## Camps

The Junior School camping program takes the following format:

### Year 3 College Sleepover (one night)

- Students take part in a sleepover at school to prepare for nights away from home

### Year 4 Camp Warrawee, Joyner (one night)

- Has a focus on developing resilience and independence

### Year 5 QCCC Mapleton (two nights)

The Year 5 camp has a leadership and individual challenge focus designed to:

- **provide** opportunities for building relationships in an informal atmosphere of sharing and learning
- **challenge** the students with new experiences
- **develop** teamwork, courtesy, consideration and responsibility
- **foster** independence and confidence in being away from home for a longer period
- **model** daily devotions and Christian lifestyle out of the classroom atmosphere



*\*further details on camps are communicated closer to the event*

### Year 6 Tallebudgera Outdoor and Environmental Education Centre (two nights)

- Has a team-building focus

## Parent Assistance

We are grateful for the many parents who assist with our College activities and who volunteer to help with camps and excursions.

Parents interested in volunteering on excursions and camps are encouraged to refer to the *Parent Guidelines* on the parent portal via the website. Parents may register their interest via (<https://www.northside.qld.edu.au/community/volunteering>) or by contacting their student's teacher directly. Class teachers will contact those parents designated to assist before an event to explain their role and responsibilities in detail.

## Missions and Fundraising

In Junior School, every year level supports a specific Missions project each year. Students are encouraged to be actively involved in sharing the Gospel and Christ's love in practical ways. Proceeds from free dress days are dedicated to a range of different needs and charities.

The Junior School supports seven sponsored studentren through Compassion Australia and World Vision. A Year level group supports and communicates with the same student (of similar age to the year level), throughout their life journey through to Year 12. Junior School students also fundraise for [Jump Rope For Heart](#) – raising money for the Heart Foundation.

## Junior Library

The Junior School Library is situated in Library Square, near the Secondary Library on the top level of D Block (*below the College Hall*). Opening hours are 8:00 am – 3:15 pm.

The Library is a hive of activity during lunchtimes and before and after school. Parents are most welcome to visit with their student before and after school.

Students in Prep – Year 2 take part in a library lesson each week and also enjoy rich literature activities to help them access information. Years 3 – 6 visit the library weekly to choose and change books. The [JS Library Dashboard](#) via the College website is an excellent place for students to visit and includes links to numerous online resources (eg encyclopaedias, World Book Online and myON, the College's online library of over 5,000 books).

Students in Years 4 – 6 can also access the Accelerated Reader program during school hours; a program designed to motivate independent reading and reward reading effort.

## Junior School Activities

The Junior School student experience is enhanced by numerous co-curricular activities that provide varied opportunities for students to develop special interests, skills and abilities, and experience new areas for development. The co-curricular program has ongoing activities for the year, such as choirs and instrumental groups, seasonal sporting activities, and a variety of special interest groups.

A timetable of available activities is published each term. Most activities are held during lunch times however, some take place before or after school.

### Instrumental Music Program

Instrumental music, choirs, bands, orchestras, ensembles, and dance and dance groups are fixtures at NCC. Performing on stage builds confidence and poise and teaches young people valuable life skills about building resilience and managing nerves.

Our students gain performance experience through the variety of opportunities that arise during the year. Each school holds weekly chapel services and assemblies. Various bands, orchestras and choirs perform at events such as biennial musicals, Grandparents' Day, Graduation, and Awards Nights and many more. Formal tuition is available for students before, during and after school.



### Class Instrumental Program (Years 4 – 6)

In Years 4 – 6, optional group lessons are offered for string, wind, brass and percussion instruments. Students undergo an audition process to help select a chosen instrument. On being offered a place in the program, students commit to learning an instrument for twelve months at a minimal cost. These students are expected to participate in a performance group related to their instrument, such as the Junior School Concert Band or String Ensembles.

### Private Instrumental Program (Years 1 – 12)

Students can take individual lessons, or lessons in a group setting, across a range of musical instruments and vocal lessons. Individual teachers offer lessons on-campus during school hours, and students are withdrawn from class for lessons each week.

If students cannot attend their private lesson (due to excursion, illness or emergency, etc), parents are responsible

for notifying the teacher at least 24 hours in advance, and as soon as possible; preferably via phone (call or text).

#### Application and Fees

- Class instrumental fees are payable to the College.
- Private instrumental fees are issued by the individual teacher, usually at the beginning of each term.
- Applications for the instrumental music program can be made online via the College website at [Co-Curricular/Performing Arts](#)

For more information visit the [College website](#)

## Special Events

### Student Birthdays

Birthdays are special occasions, and students enjoy having friends join in their excitement. Parents may supply a birthday cake/cupcakes/ice blocks or similar to be shared with class members.

**As there are students with severe nut allergies, please do not send nut or nut products.** Parents of students with allergies are welcome to send a small supply of alternate food to be kept in the freezer for these occasions.

### Grandparents Day

Each year, the College welcomes our grandparents as honoured visitors to an annual student performance, including light refreshments.

#### Musical Matinee (biennial)

In years ending in odd digits (e.g. 2019, 2021), the emphasis is on our Secondary students giving the premiere performance of the College Musical. Grandparents of all students across the College are invited to attend and join their Junior School grandchildren for morning tea before attending the matinee performance.

#### Junior School Concert Day (biennial)

In years ending in even digits (e.g. 2020, 2022), grandparents of Junior School students are invited to attend the Junior School Concert and enjoy a special time with their grandchildren afterwards over brunch.

The Junior School concert showcases abilities, talents, community spirit and is a definite crowd favourite, as all Junior School students, including Prep, perform.



### End-of-Year Celebrations (annual)

We believe it is important for students to celebrate educational milestones with their families.

Near the end of Term 4, there are events to celebrate Year 6 Graduation from Junior School, special awards, and leadership roles for the next school year.

**Celebration Morning (Prep-Year 2)** is an opportunity for students in the Early Years to present a Christmas performance focusing on the gift of Jesus Christ to us.



